

CHUNG-ANG UNIVERSITY INTERNATIONAL PROGRAM

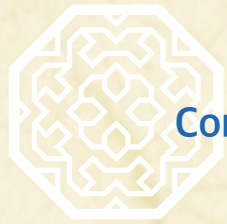


Open Your Future
@CAU in Seoul, Korea

Contact Us

Office of International Affairs
84 Heukseok-ro, Dongjak-gu, Seoul 06974, Korea
Tel: 82-2-820-6573, 6202, 6744, 6574, 6531
Fax: 82-2-813-8069
Email: inbound@cau.ac.kr
<http://oia.cau.ac.kr>





Contents

- | | |
|--|--|
| 04 Korea and Seoul | 13 CAU Global Ambassadors |
| 05 Campuses | 14 International Summer / Winter Program |
| 06 History of Chung-Ang University | 16 Customized Study Tour Program |
| 08 About CAU | 18 Blue Mir Hall (Dormitory) |
| 10 Study Abroad and Exchange Program | 19 International Partners |
| 12 Cultural Activities | 22 Fields of Study |



CHUNG-ANG UNIVERSITY

- A leading private comprehensive university established in 1918
- Campuses : Seoul and Anseong
- Korean conglomerate Doosan incorporated CAU in 2008



15
Colleges



17
Graduate Programs



23,567
Undergraduate Students



5,497
Graduate Students



3,387
International Students



2,630
Professors



632
Administrators





Republic of KOREA



The Republic of Korea is a small country on the far eastern edge of Asia. Although it ranks 106th in the world in terms of land area, the country is a center of economic activity, culture, and arts. Today, Korea is an industrial nation standing tall on the world stage. Korea's semiconductor, automobile, shipbuilding, steel and IT industries are leaders in the world's global markets. Korea has also been host to the 1988 World Olympic Summer Games in Seoul, the 2002 Korea-Japan FIFA Worldcup and the 2018 World Olympic Winter Games in PyeongChang. Recently, Korean dramas, movies, and music are attracting many audiences in Asian countries and beyond, creating the "Korean Wave." Korea's new standing in the international community was highlighted in 2010 by becoming the first Asian country to chair the G20 and host the G20 Seoul Summit.



Some figures to show Korea's status in the international level:

- 12th GDP / 6th Exports / 9th Imports (2017)
- 20th Foreign Direct Investment (2017)
- 109th Territorial Area (2018)
- 28th Population Size (2019)



SEOUL

Seoul is the world's 5th largest city. It is also the center of all political, economic and cultural activities in Korea. Korea's past and present coexists harmoniously — with a heritage that spans across centuries and a future that lies on the cutting-edge technology of its IT industry. The city is surrounded by beautiful mountains and is built around the banks of the Han River. The nearest seaside is located only an hour away from Seoul.

Campuses



Seoul Campus

Located in the heart of Seoul near the National Cemetery on the southern side of Han River.



Anseong Campus

Situated on the outskirts of Anseong City, Gyeonggi-do Province, which is about one hour ride from Seoul campus.

Administrative and systemic integration of the Seoul Campus and Anseong Campus has allowed the seamless creation of a single Chung-Ang University Campus, undivided by distance. The united campuses have been together since July 2011. This has brought Chung-Ang closer to achieving its vision of offering world class education and academic excellence through efficient management.

History of Chung-Ang University

1918
Foundation

1918-1945
Foundation & Trial

1946-1986
Growth & Development

1987-2004
Reformation & Change

2005-2010
Innovation & Growth

2012
New Start

1918
Established Chung-Ang Kindergarten as an annex to Chung-Ang Methodist Church in Seoul, as the first and only educational entity fully founded and supported by Koreans.

1922
Upgraded Chung-Ang Kindergarten's training school for teachers to Chung-Ang Training School for Kindergarten Teachers.

1947
Renamed as Chung-Ang Junior Women's College, and was changed to Chung-Ang Women's College.

1953
Accredited as Chung-Ang University which consisted of the College of Liberal Arts & Science, the College of Law, the College of Business, and the College of Pharmacy.

Inaugurated Dr. Yim Young-shin as the first president.

1965
Adopted sister middle school and high school as affiliates in 1965 and soon afterwards an affiliated elementary school as well in an effort to deliver consistent well-rounded education from kindergarten to graduate school.

1970
Added the College of Medicine to its list of undergraduate Schools and took over Seong Shim Hospital.

1980
Extended its infrastructure on Anseong campus to accommodate seven undergraduate schools between 1980 and 1984.



2004
Awarded as "a" Top University for Areas of Specialization.

Ranked fourth in the National Customer Satisfaction Index university category.

2005
Ranked First in employment rate by the Ministry of Education&Human resources.

Selected Top university(graduate school) based on general university evaluation.

2008
Incorporated as an educational institution by the global corporation, Doosan Group.

2012
Merged with the Red Cross College of Nursing to become the largest School of Nursing in Korea.

Approval to unify the Seoul and Anseong campuses.

2013
Inauguration of the 14th President Dr. Lee Yong-goo.

Framework Convention on the Incheon Campus signed with Incheon Metropolitan Government.

2014
The launch of Department of ICT(Information and Communication Technology).

The launch of school's centennial anniversary committee.

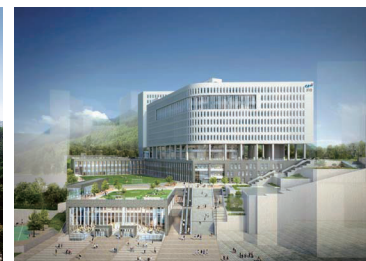
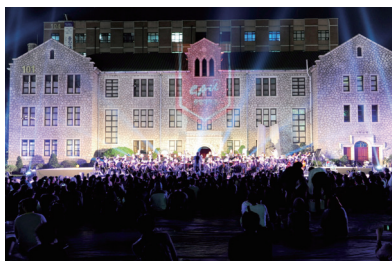
2015
Opened 2nd state of the art dormitory(2nd Blue Mir Hall).

2016
Opening centennial memorial hall

2018
Centennial Anniversary

Hosting 2018 14th QS APPLE Conference

CAU 2030 Announced



About CAU

🌐 Incorporation of Chung-Ang University by Doosan

CAU has dramatically developed since its incorporation as an educational institution with the global corporation Doosan Group.

Since Doosan started managing CAU, the university has gone through powerful self-reforms and gained a higher reputation as an educational institution. The innovation of CAU is growing stronger, building up for another take off.

- 2019 QS World Ranking 397th, 2019 THE Asia-Pacific Ranking 72nd, 2018 THE Asia Ranking 50th



- Korea's oldest business organization with a proud history of 124 years
- Enriching the world as an ISB(Infrastructure Support Business) Leader
- Operates 25 domestic and 115 overseas subsidiaries



🌐 Innovation and Integration

Chung-Ang University has reorganized its previous academic management system to improve its overall educational competitiveness.

52 departments and 15 Colleges

CAU's integration of the main school and branch school, merging with the Red Cross College of Nursing, and an initiative for multi-campus are all evidence of CAU's efforts to raise its competitiveness and provide a higher quality of education by merging overlapping departments and nurturing real student talents to be ready and wanted in the global market.

Launch of Korea's Largest College of Nursing

CAU consolidated all of its medical related majors, medicine, pharmacy and nursing, into one location through the addition of 1,000 beds to CAU hospital and the construction of Building 102.

Integration of the Main School and Branch School

As the first university in Korea to integrate the main school and branch school, CAU is now able to operate student quota and education space of each campus more efficiently.



🌐 First to Establish in Korea

School of Economics, School of Pharmacy, School of Business Administration, Department of Advertising and Public Relations, School of Performing Arts and Media, School of Mass Communication

With a long history and deep tradition, Chung-Ang University is proud of its various departments. Chung-Ang University is constantly striving towards becoming the best in Korea and one of the best in the world.

In particular, its culture and arts-related programs have been widely recognized as the best in the nation and have enabled the university to gain the status as the center of the recent "Korean Culture Wave" outside of Asia.

🌐 Chung-Ang Proves its Worth with its Exceptional Alumni

Currently, Chung-Ang University is in pursuit of a vision to create a global top tier university, through its CAU2030 plan : outstanding performances and global reputation in the fields of human & physical infrastructure research, education and internationalization, etc. that are foundation of sustainable growth. This goal will lead CAU to the future of higher education based on the innovative mind.

🌐 The Preferred University by Korean Students

Chung-Ang University continues to gain status as a first-choice university by Korean students.

Admission standards have increased along with higher enrollment rates from 14:1 (applicants 28,850 / admissions 2,055) in 2008 to 18.7:1 applicants 90,262 / admissions 4,829 in 2019

It is evident from these figures that since the university's incorporation by Doosan — increasing its educational budget — and the university's intensive reforms for better education, Korean students have renewed their trust and expectations in the quality of education provided by Chung-Ang University.

Study Abroad and Exchange Program

Experience a Unique Study Abroad and Exchange Program at CAU

- > See and experience the epicenter of the Korean Wave
- > Sign up for over 1,000 courses offered in English in a variety of subject areas
- > Take customized courses specifically for exchange students on Korean Studies
- > Join in on numerous cultural excursions and field trips
- > Apply for an on-campus internship
- > Receive special scholarships as a student from our partner institutions



Academic Schedule

The CAU Academic Schedule consists of two semesters each for the duration of 16 weeks. Students can apply for one semester or one academic year, starting in either Spring or Fall.

| | Spring Semester | Fall Semester |
|-------------|--|--|
| Application | Mid Nov. | Mid May |
| Semester | March 16 th ~ June 26 th | Sep. 1 st ~ Dec. 21 st |



CAU Exchange Program

Regular Exchange Students

All students from CAU Partner Universities who are interested in studying abroad for one semester or a year can apply as regular exchange students.

Non-Partner University Students

CAU Program for Non-partner University students is designed to give students an opportunity to study at CAU. Students in this program can study at CAU under the same conditions and privileges as regular exchange students, while paying tuition to CAU. This program allows students to participate in one semester of study at CAU with the permission of their home university.

Courses

The core principles of a university are its people and academic disciplines. Chung-Ang University is dedicated to follow these principles and to become a better university. Students can study and research in a studious environment from 60 different majors and take courses offered in English. Students can also take Korean-related courses to get an in-depth understanding of Korean culture and society.

For a complete list of courses please visit the following link:
<http://oia.cau.ac.kr>

Global Lounge

CAU offers a Global Lounge for exchange students. In the Global Lounge, exchange students have the opportunity to converse with Korean students and improve their Korean language skills. This is a wonderful opportunity for exchange students to connect with local Korean students and learn some useful phrases that will help them during their stay in Korea.

Application Procedure

A. Online Application Submission : http://neweng.cau.ac.kr/04_international/exprogram08.php

B. Online Documents Submission

1. Completed Online Application Form
2. Official Academic Transcript
3. Photograph (front, hatless, passport style): 3.5 × 4.5cm
4. Copy of Passport
5. Nomination letter from international related office at home University
6. Declaration and Certification of Finance
7. Signed Dormitory Agreement (if applying for on-campus housing)

Scholarship Opportunities

A. CAU Global Scholarship

| | Eligibility | Benefits |
|---|--|---|
| CAU GSI (Global Student Internship) | Qualified students who are Native Speakers of English or French | <ul style="list-style-type: none"> • An on-campus internship opportunity • Maximum of \$1400 per semester |
| CAU OIA-Fellowship | <ul style="list-style-type: none"> • Foreign CAU exchange students • International Exchange Student Advisors | <ul style="list-style-type: none"> • Maximum of \$1000 per month • Accommodation expenses |
| CAU GOS (Global Opportunity Scholarship) | CAU Exchange students from eligible designated countries | <ul style="list-style-type: none"> • Living & On-campus accommodation expenses |

B. Global Korea Scholarship

GKS (Global Korea Scholarship) is a scholarship sponsored by the NIIE (National Institute for International Education in Korea).

- **Eligibility:** Qualified CAU Exchange Students and scholarship applicants
- **Benefits:** Airfare, Monthly Stipend, Settlement Allowance, and Insurance Fee

C. ASEM DUO Scholarship

DUO-Korea Scholarship is a scholarship promoting education exchanges between Korea and European countries. This scholarship is offered to pairs of students.

- **Eligibility:** Students from European partners universities
- **Benefits:** 8,000 Euros for a pair of students (4,000 Euros for each student)

Costs

Tuition is waived for international exchange students. However, students are responsible for housing and meal costs unless the exchange agreement has a waiver provision. The estimated costs are as follows:

| | Amount |
|--------------------|---------|
| Housing(Dormitory) | \$1,300 |
| Meals | \$700 |
| Transportation | \$600 |
| Books and Supplies | \$200 |
| Personal Expenses | \$1500 |
| Total | \$4,300 |

※ The above fees are based on the one semester and are subject to change.



Cultural Activities (CKEP: CAU Korea Exploration Program)

Chung-Ang University not only offers curriculum and educational services of the highest standard but also provides an opportunity for International Students to personally experience Korean culture through many cultural activities.



Traditional Culture Activities

International students are invited to see, feel and enjoy Korean traditional culture in the traditional-style village (Korean folk village or Hanok village) that recreates the lifestyle of several centuries ago. They will have chances to explore traditional housing, clothing, customs and have traditional Korean food and can witness and immerse themselves in traditional Korean lifestyle and culture.

Exploring the Landscape of Korea

Even though in terms of land Korea is small, it is a country filled with beautiful and natural sceneries. It is a country with four distinct seasons that provides an opportunity for distinct seasonal activities. In the summer, you can walk on the beach through natural tidal flats. In the fall, you can enjoy the beautiful autumn leaves on natural landscapes and beautiful mountains. In the winter, experience the snow covered mountains and scenery on a trip to a ski resort. This exchange program is not only for learning but also an opportunity for International Students to experience the beautiful landscape and seasons of Korea.



Join in Interactive Activities with Local Students.

Sports Games

International students will have chances to watch Korean professional baseball/football/basketball leagues with local students and will experience the Korean sports game and cheering culture.

Chung-Ang Festival (CAURIVAL)

International students can participate in an annual Chung-Ang festival during the semester. During CAURIVAL festival, international students can interact with native Chung-Ang University students through activities and games and can also introduce themselves and share each other's cultures during this time. Performances on campus by famous celebrities, such as PSY, are also popular entertainment for exchange students and their friends.



CAU Global Ambassadors (GLAM)

CAU Global Ambassadors are student leaders who support Chung-Ang University's campus globalization. They are a group of students who are selected and trained to facilitate global activities on CAU Campus and offer friendly advice and help for exchange students.



Friend and Campus Life Advisor

CAU Global Ambassadors will help international students adjust to campus life and promote interaction between international students and Chung-Ang students. They play the role of friends, Korean language and culture tutors and campus life advisers.



Pre-Arrival Assistance

Global Ambassadors can help the exchange students before their arrival to Chung-Ang University and throughout the semester regarding living in Korea and the campus life through the perspective of a Chung-Ang University student. Conversation and interaction between ambassadors and exchange students are encouraged.



Airport Pick-Up

Based on a designated pick-up schedule, CAU Global Ambassadors will provide pick-up service for exchange students and help them to find their way onto campus and give a short orientation regarding campus and dormitory life.



Cultural Events and Excursion

CAU International Office offers various cultural events and excursions where both CAU Global Ambassadors and exchange students can participate and explore Korean Culture.



Student Club or Small Group for Exchange Students

Depending on the number of students, those who share similar interests may organize a small group or club for CAU Global Ambassadors and exchange students.



GLAMs are here to help exchange students!

International Summer / Winter Program

causummer.com

cauwinter.com



Academic Achievement and Korean Culture

- Live high in comfort at a low in cost
- Learn at the best university in Culture and Arts Korea
- A hands-on introduction to Korea while earning credits in core subjects for your home university.
- Earn transferable credit hours upon successful completion of this program
- Learn, have fun, and bond with International and Korean Students
- Special Scholarships for Partner Institution Students

Lectures

A. Summer Session 1 (6 Credits)

| Type | | Course |
|--------------------------------|----------------------------|---|
| Major A (3 Credits, 6 ECTS) | Business | Logistics and Economic Development |
| | | Integrated Marketing Communication |
| | Software Engineering | Contents Planning and Development |
| | International Relations | Understanding International Relations : Issues, Controversies, and Perspectives |
| | Technology | Nanotechnology in Everyday Life |
| | Media | New Media and Society |
| | Korean Language | Basic Korean |
| | | Intermediate Korean |
| | | Advanced Korean |
| Major B (3 Credits, 6 ECTS) | Korean Society and Culture | 5 Special Lectures (15 hours) and various cultural activities |

※ Specific elective course titles will be updated every summer.
※ Insufficient enrollment can be cause for cancellation of any of the classes
※ The above courses are subject to change without prior notice.

B. Summer Session 2 (5 Credits)/ Winter (4 Credits)

Students enrolled in Session 2 of the summer program & Winter Program will take courses focusing on Korean Language coupled with classes covering Korean Culture and Society.

| Korean Language (3 Credits for ISP / 2 Credits for IWP) | Korean Studies (2 Credits) |
|--|---|
| Korean Language : Basic, Intermediate, Advanced | Lectures related to Korean culture and society <ul style="list-style-type: none">• Korea from a Foreigner's Point of View• Korean Folklore Culture• Korean Pop Culture• Korean Economic Development• Intro of Korean Arts |
| | Cultural activities and Field trips |
| | |
| | |

※ The above courses are subject to change without prior notice.



Experiential Learning

Student will have chance to experience Korean culture and society first hand through lectures, academic excursions, cultural experiences and field trips.

Some culture trips include the Seoul City Tour, Visiting Korean Corporations, Field Trip to Gangwon-do, DMZ (Demilitarized Zone), Korean Folk Village, Korean Culinary Experience, Taekwondo, Experience Wearing Hanbok (Traditional Korean Costume), Traditional Korean Music and instruments, Korean Ceramic Art.

Academic Schedule

| | Summer Session 1 | Summer Session 2 | Winter Session |
|----------------------|----------------------------|---------------------------------|-------------------------------------|
| Application Deadline | Middle of May | Middle of May | End of November |
| Program Period | End of June to End of July | End of July to Middle of August | Middle of January to End of January |

Qualification

All Students who are currently enrolled at college or university level institutions.
English proficiency for non-native speakers. (TOEFL is not required, however, your English should be proficient enough to take courses conducted in English)

Application Procedure

Fill out and submit the online application form (causummer.com or cauwinter.com)
➡ Attach the application materials to the online system ➡ Receive confirmation email with invoice ➡ Pay tuition ➡ Receive a Letter of Admission ➡ Come to CAU!

Fees and Payment (USD)

Affordable and Incredible!

| | Summer Session 1 | | Summer Session 2 | | Winter Session | |
|-----------------|------------------|----------------------------|------------------|----------------------------|-----------------|----------------------------|
| | Regular Students | Partner university Student | Regular Student | Partner university Student | Regular Student | Partner university Student |
| Application Fee | 60 | - | 60 | - | 60 | - |
| Tuition | 6 Credits 3,000 | 1,500 | 5 Credits 2,600 | 1,300 | 2,200 | 1,100 |
| pick-up | 50 | - | 50 | - | 50 | - |
| Dormitory | 378 | 378 | 280 | 280 | 224 | 224 |
| Total | 3,488 | 1,878 | 2,990 | 1,580 | 2,534 | 1,324 |

※ The above fees are subject to change.
※ The full tuition waiver will be given to the students nominated by partner universities as exchange students under the exchange arrangement.

Study
Abroad
and
Exchange
ProgramCultural
ActivitiesCAU Global
AmbassadorsInternational
Summer /
Winter
ProgramCustomized
Study
Tour
Program

Blue Mir Hall

International
PartnersFields of
Study

Customized Study Tour Program

The Office of International Affairs is happy to provide customized study tour programs for colleges and universities overseas. We work closely with each group to design a program that will meet the needs and objectives of the course or program. The program aims to provide opportunities to learn Korean culture and society and have cultural experiences for fostering an understanding of Korean culture and society. Your students can expand their world view through an understanding of Korea by interacting with local students and faculty who can share their perspectives on life in Korea.

CAU customized study tour program includes:

1 

Korean language courses,
special lectures on
Korean culture & society

2 

Experiential learning :
Academic excursions,
cultural field trips, visit
to companies



4

Orientation and
Closing Ceremony



5

Accommodation on
campus (During vacation)
and Accommodation off
campus (During semester)

3
Period :
1 week ~ 1 month
(during Summer or Winter break)
Summer break
End of June ~ End of August
Winter break
End of December ~
End of February



Program Example

Week 1 ~ Week 2 (10 days)

1

Arrival in Seoul, orientation
session, campus tour, and
welcome dinner



2

Accommodation for 10 days in
the CAU dormitory



3

**Special lectures on Korean
culture and society :**

North Korean Politics and
South-North Korean Relations,
Innovation in Korea, Korean
Wave and Korean Media



4

**Cultural and
leisure activities :**

Seoul City Tour, The Royal
Palace, Field trip visit to
DMZ(Demilitarized Zone),
Korean folk village, Nanta
concert



7

Meeting and discussion with
local students about the
Korean society and Korean
Wave



5

Weekend Excursions :

Traditional Hanok Homestay



6

Visit corporate companies :

Doosan Heavy Industries &
Construction, Hyundai Motors



8

Closing ceremony and Award
of Certificates at University



Study
Abroad
and
Exchange
Program

Cultural
Activities

CAU Global
Ambassadors

International
Summer /
Winter
Program

Customized
Study
Tour
Program

Blue Mir Hall

International
Partners

Fields of
Study

Blue Mir Hall



Chung-Ang University Dormitory

The best and most advanced university dormitory in Korea, Blue Mir Hall was built using Mondrian abstract art that balances symmetry and order and is one of the newest landmarks of Chung-Ang University. This residential building is surrounded by a small natural forested environment. The building is equipped with the state of the art air conditioning and heating system, high speed wireless internet access, a large dining area, fitness center, cafe and a lounge.

Blue Mir Hall 1 & Blue Mir Hall 2 can accommodate up to 2,400 students and has a gross floor area of 53,110 square meters. Blue Mir Hall 1 is 15 stories high with two basement floors, Blue Mir Hall 2 is 14 stories high with one basement floor. With a pleasant living environment and a hotel level of amenities, Blue Mir Hall brings a sense of comfort and joy to all. Exchange students even receive priority housing placement in Blue Mir Hall.

Rooms



With a view of the city and luscious green scenery, each room comes with bright lighting, internet access, desk, shower, and lavatory to provide the most pleasant and comfortable campus life to each and every student.

Guest House

This is available for visiting professors or researchers at Chung-Ang University. The guest house can accommodate single visitors or visitors and their families. Each guest house comes equipped with bright lighting, internet access, desk, shower, lavatory, kitchen, refrigerator, and a television.



Television



Sky Park



Restaurant



Laundry Room



Fitness



Computer



International Partners

Americas

Brazil



Brazilian Association (ABRUEM)
The Federal University of Minas Gerais (UFMG)
Mackenzie Presbyterian University
Pontifical Catholic University of Rio de Janeiro
University of Campinas

Canada



Ryerson University
Lakehead University
Memorial University of Newfoundland
Memorial University of Newfoundland, Grenfell Campus
Memorial University of Newfoundland, St. John's Campus
University of Alberta
University of Manitoba
University of Ottawa
University of Saskatchewan
University of the Fraser Valley
Vancouver Island University

Chile



Finis Terrae University
Universidad de los Andes

Columbia



Universidad de los Andes
Universidad del Rosario
Universidad Tecnológica de Bolivar

Costa Rica



Universidad Latina De Costa Rica

Mexico



Tecnologico De Monterrey
Universidad de Monterrey
Universidad La Salle
Universidad Tecmilenio
Universidad Nacional Autonoma de Mexico

Peru



Universidad San Ignacio de Loyola S.A.

Uruguay



Universidad ORT Uruguay

USA



Alaska Methodist University
Alaska Pacific University
American University
Asia Pacific College (CAPE)
Brookhaven College
California State University, Bakersfield
California State University, East Bay
California State University, Fullerton
California State University, Long Beach

California State University, Los Angeles
California State University, Sacramento
California State University, Stanislaus
Campbellsville University
Central Washington University
Columbia College
Findlay College
George Washington University
Georgia State University
Hawaii Pacific University
Kansas State University
Michigan State University, VIPP
Mississippi State University
Minnesota State University, Moorhead
Monterey Institute of International Studies
North Dakota State University
Oklahoma State University
School of Visual Arts
Southeast Missouri State University
Southwest State University
St. Louis College of Pharmacy
State University of New York, Oneonta
State University of New York, Oswego
State University of New York, Plattsburgh
Stevens Institute of Technology
Temple University
Towson University
Tufts University
University of Cincinnati
University of Hawaii, Hilo
University of Houston
University of Iowa
University of Nebraska, Kearney
University of North Carolina, Chapel Hill
University of San Francisco
University of Southern California
University of Wisconsin, Stout
Utah State University
Virginia Commonwealth University
Widener University
Winona State University

Asia

Bangladesh



Daffodil International University

Brunei



Universiti Brunei Darussalam

Cambodia



Life University
Pannasastra University of Cambodia
The Royal University of Fine Arts

China



Beihang University
Beijing International Studies University
Beijing Normal University
Capital Normal University
Central University of Finance and Economics
Central University of Nationalities
Chang'an University
Changchun University of Technology
China Univ. of Politic Science and Law
China University of Geosciences
Chinese Academy of Sciences'Inst' of Automation
City University of Hong Kong
Communication University of China, Nanjing
Dalian Art College
Dalian Maritime University
Dalian University of Technology
Fudan University
Guangdong University of Foreign Studies

Guilin University of Technology
Harbin Engineering University
Harbin Institute of Technology
Henan Normal University
Hong Kong Baptist University
Hong Kong College of Technology
Hong Kong Shue Yan University
Hubei Institute of Fine Arts
Institute for Tourism Studie
Institute of Advanced Technology Heilongjiang Acad
Jiangsu Ocean University
Jilin Agricultural University
Jilin Normal University
Jinan University
Jinling Institute of Technology
Lanzhou University
Liaoning University
Lignan University
Macau University of Science and Technology
Nanjing University
Nanjing University of the Arts
Nankai University
National Academy of Chinese Theatre Arts
Northeast Normal University
Northeastern University
Northwest University of Politics & Law
Northwestern Polytechnical University
Qingdao Agricultural University
Renmin University of China
Shandong University of Finance and Economics
Shandong University of Technology
Shandong University
Shanghai Jiao Tong University
Shanghai University
Shenzhen University
Sichuan Fine Arts Institute
Sichuan International Studies University
Sichuan Normal University
Sichuan University
South China Normal University
Southwestern University of Finance and Economics
The Chinese University of Hong Kong (Shenzhen)
The Education University of Hong Kong
The Hang Seng University of Hong Kong
The Hong Kong Polytechnic University
Tianjin Foreign Studies University
University of International Business and Economics
University of Nottingham, Ningbo
Wuhan University
Xiamen University
Xi'an International University
Xiangtan University
Yanbian University
Yangzhou University
Zhanjiang Normal University
Zhengzhou University

India



Banaras Hindu University
Chandigarh University
Chitkara University
Indian Institute of Technology Madras
S. V. National Institute of Technology, Surat
Vel Tech Dr. RR & Dr. SR Technical University

Indonesia



Atma Jaya Catholic University
Binus University
Bogor Agricultural University
Diponegoro University
Duta Wacana Christian University
Gadjah Mada University
Institut Teknologi Bandung
Sepuluh Nopember Institute of Technology
Syiah Kuala University
Universitas Airlangga
University of Surabaya

Study
Abroad
and
Exchange
Program

Cultural
Activities

CAU Global
Ambassadors

International
Summer /
Winter
Program

Customized
Study
Tour
Program

Blue Mir Hall

International
Partners

Fields of
Study

Japan



Aichi Shukutoku University
Aichi University
Chiba University
Chuo University
Doshisha University
Hokkaido University
Hosei University
J.F.Oberlin University
Kagoshima University
Kindai University
Kobe University
Kochi University
Kwansei Gakuin University
Kyushu Sangyo University
Kyushu University
Mie University
Nagasaki University
Nagoya City University
Osaka City University
Osaka University
Ritsumeikan Asia Pacific University
Ritsumeikan University
Ryukoku University
Saitama University
Sapporo University
Tohoku University
Tokyo Metropolitan University
Toyo Eiwa Jogakuin

Jordan



Jordan University of Science and Technology

Kazakhstan



Al-Farabi Kazakh National University
Kazakh Ablai Khan University of IRWL
Kazakh Academy of Sports and Tourism
Kazakh National Pedagogical University named after Abay
Kazakhstan Institute of Management, Economics and Strategic Research
Korkyt Ata Kyzylorda State University

Kyrgyz



Bishkek Humanities University

Lebanon



American University of Beirut
Lebanese American University

Malaysia



HELP University
Limkokwing Univeristy of Creative Technology
Taylor's University Universiti Putra Malaysia
The Malaysia University of Science and Technology
UCSI University
Universiti Malaysia Pahang
Universiti Kebangsaan Malaysia
University of Malaya
Universiti Putra Malaysia

Mongolia



Mongolian University of Arts and Culture
Mongolian University of Science and Technology
Ulaanbaatar University

North Korea



Pyongyang University of Science and Technology

Pakistan



National University of Sciences and Technology

Philippines



Adamson University
Ateneo de Manila University
De La Salle University
Mapua Institute of Technology
The Polytechnic University of the Philippines
University of San Carlos
University of The Philippines Diliman

Singapore



Nanyang Technological University
Singapore Institute of Management
Singapore Management University
Singapore Polytechnic

Taiwan



Asia University
Chung Yuan Christian University
Feng Chia University
Fu Jen Catholic University
Hsing Wu University
Ming Chuan University
National Central University
National Chengchi University
National Chi Nan University
National Chiao Tung University
National Chung Cheng University
National Chung Hsing University
National Dong Hwa University
National Kaohsiung Normal University
National Sun Yat Sen University
National Taipei University of Technology
National Taiwan Normal University
National Taiwan Ocean University, ROC
National Taiwan University of Arts
National Taiwan University of Science and Technology
National Tsing Hua University
National University of Kaohsiung
National Yang-Ming University
Shih Hsin University
Soochow University
Tainan University of Technology
Tamkang University
Tatung University
University of Taipei

Thailand



Burapha University
Chiang Mai University
Chulalongkorn University
Kasetsart University
Khon Kaen University
King Mongkut's Institute of Technology Ladkrabang
King Mongkut's University of Technology North Bangkok
King Mongkut's University of Technology Thonburi
Prince of Songkla University
Silpakorn University

United Arab Emirates



Canadian University Dubai
Institute of Management Technology
RAK Medical & Health Sciences University

Uzbekistan



Tashkent State Institute of Oriental Studies
Tashkent State Pedagogical University named after Nizami
Uzbek State University of World Languages

Vietnam



Dalat University
Foreign Trade University
Ha Noi University of Industry
Hanoi University of Pharmacy
Hoa Sen University
Ho Chi Minh City University of Technology
Hue University
Hue University of Medicine and Pharmacy
Ton Duc Thang University
University of Economics Ho Chi Minh City
University of Medicine and Pharmacy HoChiMinh City
Vietnam International Education Development
VNU Hanoi, College of Foreign Languages
VNU Hanoi, University of Economics and Business
VNU Hanoi, University of Languages&International Studies
VNU Hanoi, University of Social Sciences & Humanities
VNU Hanoi, University of Engineering & Technology
VNU Hanoi, University of Science
VNU-HCM, Univ. of Social Sciences & Humanities
VNU-HCM, University of Science
VNU-HCMC University of Economics and Law

Europe

Austria



University of Applied Sciences Bfi Vienna
Alpen adria Universitaet Klagenfurt

Belgium



ICHEC Brussels Management School
University of Namur

Czech Republic



University of Ostrava
VSB-Technical University of Ostrava

Denmark



Copenhagen Business School
Jutland Art Academy
Roskilde University
University of Southern Denmark

Estonia



University of Tartu

Finland



Aalto University
South-Eastern Finland University of Applied Sciences
Savonia University of Applied Science
University of Turku

France



Association Leonard de Vinci
ECE Paris-Ecole d Ingenieurs
EDHEC Business School
ESCE International Business School
ESSCA School of Management, EDHEC Business School
European Institute of Technology(EPITECH)
Haute ecole des arts du Rhin(HEAR)
IGS Groupe
INSA Rouen Normandie
INSA Toulouse
INSEEC School of Business and Economics
IPAG Business School
IPSA(Polytechnic Institute of Advanced Science)
ISC Paris School of Management
ISEN Lille
ISTC (Strategies Et Communications)
Lumiere University Lyon 2
Paris West University Nanterre La Defense
Sciences Po Bordeaux
The American Business School, IGS University
Toulouse Business School
Toulouse Catholic University
Universite Catholique de Lille
University of Rennes 1

Germany



Baden-Wuerttemberg Cooperative State University Stuttgart
Baden-Wuerttemberg Cooperative State University Mosbach
Folkwang University of the Arts
HTW Berlin University of Applied Science
Johannes Gutenberg University of Mainz
University of Augsburg
University of Music Detmold
University of Osnabruck
Technische Hochschule Nuernberg Georg Simon OHM

Hungary



The University of Szeged
University of Debrecen
University of Pecs

Ireland



Institute of Technology Carlow
Waterford Institute of Technology

Italy



Ca' Foscari University of Venice
Universita Cattolica Del Sacro Cuore
University of Udine

Lithuania



Kaunas University of Technology
Siauliai University
Vilnius University
Vytautas Magnus University

Netherlands



Erasmus University Rotterdam
Fontys Venlo University of Applied Sciences
Hague Conference on Private International Law
HAN University of Applied Sciences
Hanze University of Applied Sciences
HZ University of Applied Sciences
Radboud University
University of Twente
Windesheim University of Applied Sciences

Malta



American University of Malta

Norway



Norwegian University of Science&Technology

Poland



Cracow University of Economics
Cracow University of Technology

Portugal



University of Porto

Romania



Alexandru Ioan Cuza University
University of Bucharest

Russia



Irkutsk National Research Technical University
National Research University HSE
Peter the Great St Petersburg Polytechnic Univ
Saint-Petersburg State University
Herzen State Pedagogical University
Novgorod State University
Repin University
Ural Federal University
Yaroslav The Wise Novgorod State University

Slovenia



University of Ljubljana

Slovakia



Technical University in Zvolen
University of Zilina

Spain



Autonomous University of Barcelona(UAB)
Comillas Pontifical University
Universidad Catolica San Antonio
Universidad de Navarra
Universitat de Valencia
University of Jaen
University of Malaga
University of Mondragon
University of Technology, Arts and Design (U-Tad)

Sweden



Chalmers University of Technology
Halmstad University
Linnaeus University, Vaxjo
Orebro University
Umea University
Uppsala University

Switzerland



University of Applied Sciences of Western Switzerland
Zurich University of Applied Sciences

Turkey



Ondokuz Mayis University
Sabanci University
Istanbul Bilgi University

UK



Cardiff University
Coventry University
Royal Holloway and Bedford New College, University
University of Central Lancashire (UCLAN)
University of London, Goldsmiths
University of Sheffield
University of Sussex
University of Wales, New Port

Oceania

Australia



Deakin University
Griffith University
James Cook University
Swinburne University of Technology
University of South Australia

New Zealand



Massey University

Africa & Middle East

Egypt



The American University in Cairo

Kenya



Kenyatta University

Morocco



Groupe ISCAE
Institute of Higher Education in Management (HEM)

Fields of Study



College of Humanities

- Department of Korean Language and Literature
- Department of English Language and Literature
- School of European Languages and Cultures (German, French, Russian language and literature)
- School of Asian Languages and Cultures (Japanese, Chinese language and literature, Comparative folk studies)
- Department of Philosophy
- Department of History

College of Social Sciences

- Department of Political Science and International Relations
- Department of Public Science
- Department of Psychology
- Department of Library & Information Science
- School of Social Welfare (Social Welfare, Child Welfare, Youth Studies, Family Welfare)
- School of Media & Communication
- Department of Urban Planning and Real Estate
- Department of Sociology

College of Education

- Department of Education
- Department of Early Childhood Education
- Department of English Education
- Department of Physical Education

College of Natural Sciences

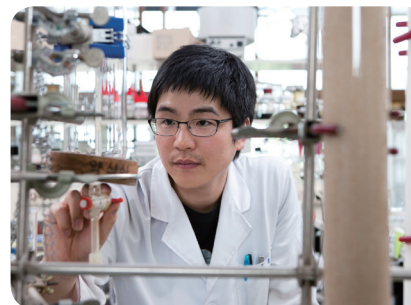
- Department of Physics
- Department of Chemistry
- Department of Biological Sciences
- Department of Mathematics

College of Biotechnology & Natural Resource

- School of Bioresource and Bioscience (Animal Science and Technology, Integrative Plant Science)
- School of Food Science and Technology (Food and Nutrition, Food Science and Technology)
- Department of Systems Biotechnology

College of Engineering

- School of Civil and Environmental Engineering, Urban Design and Studies (Civil and Environmental Engineering, Urban Design and Studies)
- School of Architecture and Building Science (Architecture, Architectural Engineering)
- School of Chemical Engineering and Material Science
- School of Mechanical Engineering
- School of Energy System Engineering



College of ICT Engineering

- School of Electrical and Electronics Engineering
- School of Computer Engineering
- School of Integrative Engineering (Nano Materials Engineering, Biomedical Engineering, Digital Imaging Engineering)

College of Software

- School of Software

College of Business and Economics

- School of Business Administration
- School of Economics
- Department of Applied Statistics
- Department of Advertising and Public Relations
- Department of Industrial Security
- Department of International Logistics
- School of Global Knowledge-based Administration

College of Pharmacy

- School of Pharmacy (not available for exchange)

College of Medicine

- Department of Medicine (not available for exchange)

Red Cross College of Nursing

- Department of Nursing (not available for exchange)

College of Arts

- School of Performing Art and Media (Creative Writing, Theatre, Film Studies, Photography, Dance, TFDesign)
- School of Fine Arts (Korean Painting, Western Painting, Sculpture)
- School of Design (Visual Communication Design, Industrial Design, Fashion Design, Housing & Interior Design, Crafts)
- School of Music (Orchestral Music, Voice Music, Composition, Piano)
- School of Korean Music
- School of Global Arts

College of Sport Sciences

- School of Sport Sciences (Recreation & Leisure Sports, Sports Industry, Golf)

College of Art & Technology

- School of Computer Art

Study
Abroad
and
Exchange
Program

Cultural
Activities

CAU Global
Ambassadors

International
Summer /
Winter
Program

Customized
Study
Tour
Program

Blue Mir Hall

International
Partners

Fields of
Study