



**KYUNG DONG
UNIVERSITY**
취/업/사/관/학/교 경동대학교

KYUNG DONG UNIVERSITY GLOBAL

KDU Global Prospectus 2026-2027

We lead the world with new traditions!

We lead the world with new traditions!

We lead the world with new traditions!

We lead the world with new traditions!

© KDU Global Prospectus 2026-2027

Edition: October 2025

All rights reserved: Kyungdong University Global

We lead the world with new traditions!

Kyungdong University Global

KDU Global Prospectus 2026-2027







Welcome to Kyungdong University Global

Kyungdong University Global (KDU Global) is one of the KDU campuses and operates as an independent institution designated for international education in Korea.

Since 2014, KDU Global has emerged as a top destination offering industry-tailored, competencies-based education, and ultimate care and support for international students from all over the world.

KDU Global student mobility programs and academic curriculums have been recognized in over 40 countries for their quality and competitiveness offering truly global educational and career opportunities for millions of students worldwide!

 info@kduniv.ac.kr

 <https://kduglobal.ac.kr>

 [prof.john.k.lee](#)

 [KDU Global](#)





Contents

| | |
|---|----|
| Message from the President | 08 |
| Location | 10 |
| About KDU - A Glance | 12 |
| Campus Guide | 14 |
| Undergraduate Programs | 18 |
| Graduate Programs | 26 |
| Language Programs | 28 |
| Vocational and Short Courses | 32 |
| Campus Facilities | 34 |
| Career Development Center | 40 |
| Global Student Mobility Network | 42 |
| International Collaboration | 44 |
| Student Services | 46 |
| Scholarships for International Students | 48 |
| How to Apply | 50 |



John Kyu Lee
President, KDU Global

Message from the President

Since the foundation of international programs at Kyungdong University Global in 2014, we have envisioned higher education in the vast and free mobility of students all around the world.

Every year, millions of students travel abroad for their studies. Every year, hundreds of international students join KDU Global to pursue their dreams.

We recognize that all our international students leave their homes, their families, and their countries seeking fulfilling experiences, better opportunities, and a better future. Hence, it is our relentless mission to take utmost care of each and every one of them during their time at KYUNG DONG and beyond their graduation.

Our united and expanding capacity with local industries and prominent partners around the world leaves no doubt that our students are exposed to tremendous opportunities.

KDU Global consistently strives to be the benchmark in international education in Korea and abroad. In the name of KYUNG DONG, in the name of your family and your country, let us work together for the best!

Why KDU Global

- KDU Global programs are accredited by international rating organizations, including IAAR, APIEM, Times Higher Education.
- KDU Global is certified in accordance with the International Education Quality Assurance System (IEQAS) in Korea.
- KDU Global offers all its undergraduate and graduate degree courses for international students in 100% English medium.
- KDU Global provides scholarships up to 100% for each semester - the university ranks No.1 in Korea in terms of the scope and coverage of scholarships for international students.
- KDU Global cooperates with close to 150 local businesses in Goseong and Sokcho areas for part-time job placements and internships.
- KDU Global provides 100% free Korean language classes for all new students starting from their first semesters.
- KDU Global is designated as the Korean Immigration and Integration Program (KIIP) Center for international students (KIIP supports permanent residence and employment visas in Korea after graduation).
- KDU Global graduates join pathway programs at universities in Canada, USA, Australia, France, Spain, Italy, and other OECD countries.
- KDU Global offers over 25 types of international student support services.
- KDU Global collaborates with and stands along the lines of the highest-ranking universities around the world.
- KDU Global is recognized as a benchmark in international education as a truly global university establishing and embracing new traditions.



KDU Global

An Exceptional Location

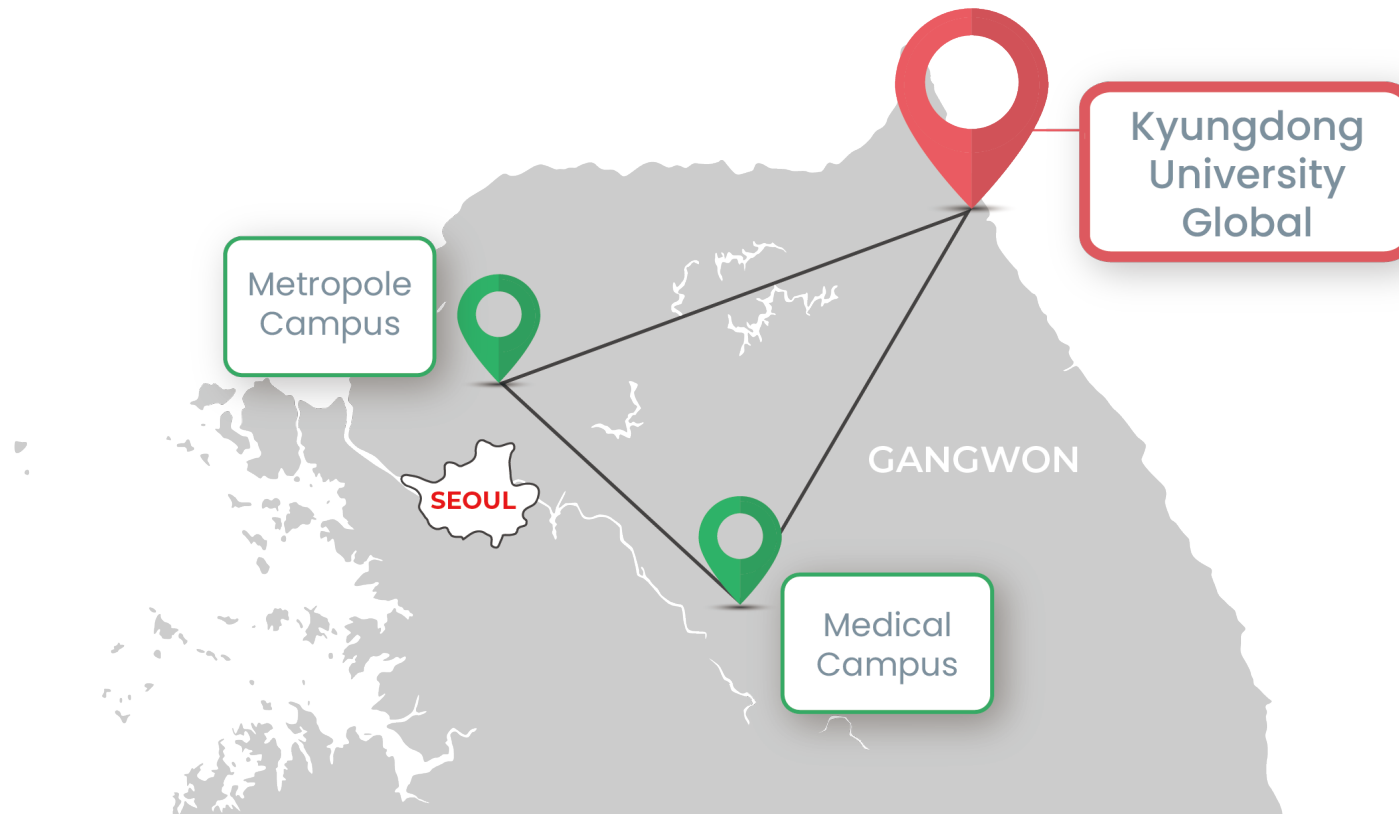
KDU Global is located in Goseong, which neighbors Sokcho city, and is known for being one of the most beautiful campuses, blessed with natural surroundings.

Students enjoy the view of the Seorak Mountains and the East Sea just a few hundred meters away from their classrooms. Beautiful lakes, stunning beaches, and pine forests contribute even more to the everyday harmony and balance at KDU Global.

Goseong and Sokcho are coastal cities in Gangwon-do province – a popular tourist destination that offers a splendid combination of history, nature, local cuisine and culture. It serves as a gateway to the famous Seoraksan National Park, Bongpo and Sokcho Beaches, which are must-visit destinations for both domestic and international tourists all year round.

The areas attract thousands of visitors every day, including domestic tourists who come with their families and friends to enjoy the picturesque scenery and local activities in all seasons of the year.

KDU Global offers an ideal geographic location for students to enjoy their lives to the fullest during their time in Korea!



About KDU - A Glance

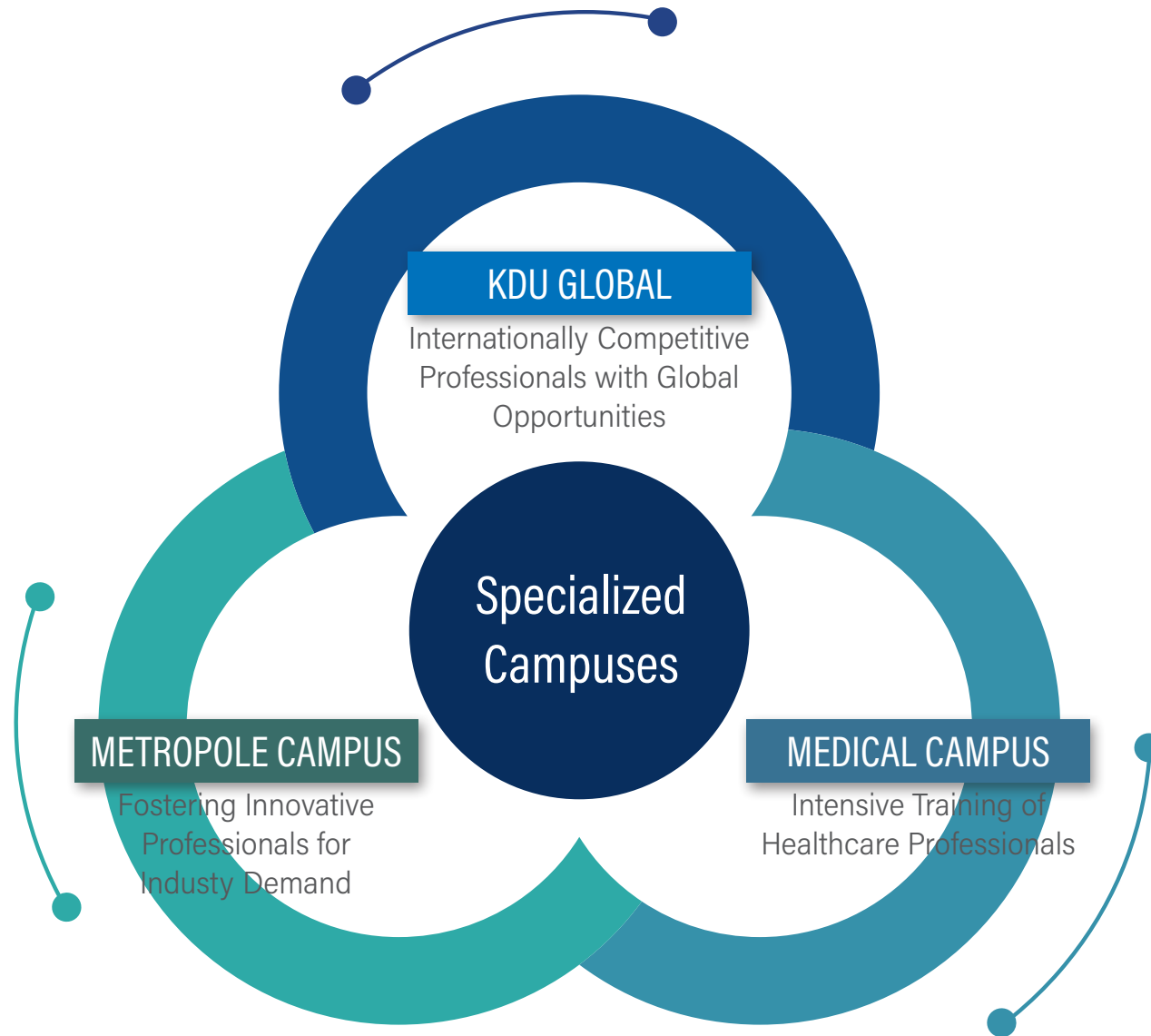
Vision

Innovative and Creative Convergence Education University
Upholding Right Character and Leading Global Status

Mission

Nurturing Capable Professionals with V3 (Virtues, Values, Vocation)
Strengthening the Employment Academy Status

- KDU ranks No.1 in South Korea in terms of employment rate of graduates for the last **six consecutive years**.
- KDU operates three campuses in Korea: **KDU Global** in Goseong, Metropole Campus in Yangju, and Medical Campus in Wonju, with over 8,000 students across over 35 undergraduate and graduate programs.
- **KDU Global** is one of the KDU campuses specially designated for international education with an independent practices and recognitions worldwide.
- **KDU Global** has admitted thousands of international students from over 80 countries for the last 10 years alone!





Campus guide

Founded in 1981, Kyungdong University (KDU) has emerged as one of the leading universities nurturing professionals in demand both in Korea and abroad!



KDU Global

Competent Professionals and
Global Leaders

KDU Global offers various undergraduate and graduate degree programs in English as well as special language training, vocational and short courses for international students. All undergraduate course curriculums incorporate five concurrent major-specialization tracks and liberal education courses aimed at enhancing language, intrapersonal and interpersonal skills of students. The graduate degree courses offer convergence- tailored curriculums in cutting-edge technologies, business, and hospitality. The ultimate mission of KDU Global is to guarantee professional and personal success of its graduates by equipping them with the competencies sought after in industries and communities of the 21st century.



Metropole Campus

Skills for Urban Industries

Undergraduate degree programs at KDU Metropole are designed to accommodate the needs of students who wish to build their careers in public sectors and urban industries. All courses are taught in Korean.



Medical Campus

Talents in Healthcare

KDU Medical offers numerous undergraduate degree programs in healthcare services and medical technologies. The Medical Campus is a prominent intensive training site for medical sector professions in the country. All courses are taught in Korean.

| Metropole Campus (Korean Medium) | | |
|----------------------------------|--|---------------------------|
| Undergraduate Programs | Architectural Design | Hotel Culinary Arts |
| | Business Administration | Early Childhood Education |
| | Police Science | Physical Education |
| | Public Administration Information Management | Computer Science |
| | International Convergence Studies | Civil Engineering |
| | Military Studies | Aviation Services |
| | Design | Public Administration |
| | Social Work | Architectural Engineering |
| | Engineering and Software | |

| Medical Campus (Korean Medium) | | |
|--------------------------------|----------------------|----------------------------|
| Undergraduate Programs | Nursing | Emergency Medical Services |
| | Dental Hygiene | Clinical Pathology |
| | Dental Engineering | Optometry |
| | Occupational Therapy | Physiotherapy |

KDU Global (International Students / 100% English medium courses)

| Undergraduate Programs | K-Global Graduate School of Business and Technology Convergence | K-Global Education Center |
|---------------------------------------|---|---|
| Artificial Intelligence | International Business Administration | English Language for Academic Purposes (EAP) |
| International Business Administration | | Korean Language for Academic Purposes (KAP) |
| International Hotel Management | Artificial Intelligence and Data Science | KDU Global Immersion Program (KGIP) |
| Smart Computing | | |
| SNS Media and Film Production | International Hospitality and Tourism Management | Korea Immigration and Integration Program (KIIP) |
| Korean AI Business | | Vocational and Short Courses (AI, Golf, Gaming, K -Beauty, K-Music) |



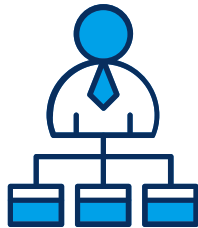
KDU Global *Undergraduate Programs*



Medium of instruction: English (100%)
Duration of study: Four years

International Business Administration

(English Medium)



International Hotel Management

(English Medium)



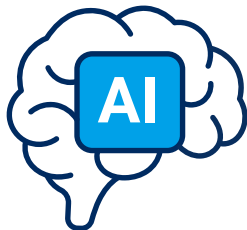
Smart Computing

(English Medium)



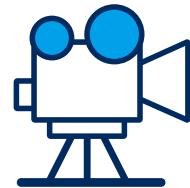
Artificial Intelligence

(English Medium)



SNS Media and Film Production

(English Medium)



Korean AI Business

(English Medium)



Undergraduate Program in International Business Administration

“Nurturing globally competent business professionals and entrepreneurs!”

Program Description

Our undergraduate degree course in International Business Administration (IBA) is designed to nurture entrepreneurs and professionals ready to lead small to multinational enterprises, drive communities for change, and become global business citizens. Whether you have a passion for Marketing and Human Resource Management, or you want to build professional career in Accounting and Finance integrated with Information Systems, the IBA program offers harmonized specializations embedding practical knowledge and skills shaping the frontiers of global entrepreneurship and international business operations. We uphold commitment and dedication to your ultimate success!

Career Opportunities

The IBA graduates are prepared to turn business challenges into opportunities, address current issues in entrepreneurship professionally, and embrace cultural and institutional diversity. They are expected to be fully capable of performing jobs in various strategic business units including Accounting and Finance, Data Analytics, Marketing, Distribution and Logistics, Retail Management and Sales, Investment and Risk Management, Personnel Management and Public Relations, Business Communications and Law, Employee Training and Development, Information Technologies, and Public Services right after graduation.

Internationally
Accredited
by IAAR

Undergraduate Program in International Hotel Management

“Leading in quality, service, culture, and brand in the global hospitality education!”

Program Description

The Bachelor of International Hotel Management (IHM) program is designed to prepare professionals for the increasingly competitive global hospitality industry. We offer a customized, cutting-edge curriculum at KDU Global that is designed to provide students with in-depth theoretical knowledge as well as extensive hands-on skills in a culturally diverse, family-like environment. Our graduates are expected to become highly employable hoteliers, restaurateurs, and entrepreneurs specializing in five major areas: Hotel Organization and Operations; Tourism Development and Marketing; Business, Finance and Entrepreneurship; Business Intelligence and Information Systems; Trends and Globalization.

Career Opportunities

The IHM graduates from KDU Global have diverse career opportunities across various sectors. They can work as hotel managers, overseeing daily operations, or as front office and guest relations managers, ensuring smooth customer experiences. In the restaurant industry, career tracks such as restaurant managers, food and beverage managers, and bar managers are readily available both in Korea and abroad. Our graduates can also pursue careers in events planning, such as event coordinators or banquet managers, organizing events and conferences. Ample opportunities are available for those who would like to work as tour guides, travel agents, and tourism development officers in the tourism industry, promoting travel experiences worldwide. Graduates with a passion for cruise ships and resort management can start their professional journeys as cruise directors and resort operations managers. Those with an entrepreneurial spirit can start their own hotels, restaurants, or travel businesses, offering customized hospitality services.



Asia Pacific Institute for Event
Management 5* Teaching
International Center of Excellence

Undergraduate Program in Smart Computing

“Empowering intelligence to nurture today’s and tomorrow’s technologies!”

Program Description

The Smart Computing (SC) program at KDU Global is designed to nurture students with in-depth understanding of the emerging technologies driving today’s industrial and social advancements. The program offers five concurrent and rapidly evolving specializations including Data Science, AI and Robotics; Cybersecurity and Privacy; Internet of Things; Games and Virtual Reality; and Software Development. By leveraging the comprehensive knowledge and hands-on experience provided by the SC program, our graduates can secure roles in diverse industries such as high-tech, healthcare, education, manufacturing, and entertainment, contributing significantly to innovation and development of communities and nations in the digital era.

Career Opportunities

The students of the SC program at KDU Global are exposed to a wide array of career opportunities as AI Engineers, Robotics Engineers, Data Scientists, IoT Developers, Software Developers, Mobile Application Developers, Cybersecurity Analysts, Information Security Managers, Game Developers, and VR/AR Developers upon successful graduation. Our graduates are also well-prepared for their further academic pursuits, including postgraduate degrees in specialized fields of computing and engineering.

Undergraduate Program in Artificial Intelligence

“Transform the world with the KDU Global undergraduate program in Artificial Intelligence!”

Program Description

The undergraduate degree course in Artificial Intelligence (AI) at KDU Global intends to nurture talents for leading AI innovations, entrepreneurs for the commercialization of AI technologies, and professionals to lead the growth of related global industries. The course delivers a distinct curriculum focused on AI in key research areas such as computer vision, bioinformatics, natural language processing, smart farming, machine learning and deep learning, and explainable AI+X applications, including healthcare, finance, intelligent agents, games, autonomous driving, and national defense.

Career Opportunities

The AI course curriculum and integrated components are designed to equip graduates with the skills necessary to overcome the challenges in computer vision, machine learning, bioinformatics and healthcare, natural language processing (NLP), and smart farming and develop technologies that will benefit humanity. Our graduates are expected to be fully capable of pursuing successful careers as robotics scientists, robot vision developers, machine learning engineers, business intelligence specialists, bioinformatics scientists, brain-machine developers, NLP engineers, NLP data scientists, AgTech data analysts and AI specialists, research scientists, and AI engineers.

Undergraduate Program in SNS Media and Film Production

“Turn your passion for media into a global career!”

Program Description

The bachelor of SNS Media and Film Production (SMFP) course is designed for creative minds passionate about Media and Film Production in the digital era with immense integration of SNS platforms into both businesses and individual lives. Combining the art of filmmaking with cutting-edge social media strategies, this program equips students with the technical skills, creative vision, and marketing expertise needed to excel in the rapidly evolving media landscape. Students learn various aspects of film production, from scriptwriting and cinematography to editing and visual effects, and master social media content creation, branding, and digital marketing techniques. With a strong emphasis on hands-on learning, collaborative projects, and global perspectives, the program prepares graduates to become innovative media professionals capable of shaping narratives that captivate audiences worldwide. Whether aspiring to create impactful films or lead successful digital campaigns, students in this program will be at the forefront of modern media innovations and their business implementations!

Career Opportunities

The graduates of the SMFP program are well-equipped to pursue diverse and dynamic careers in the rapidly evolving fields of film, media, and digital communication including. They can work as directors, producers, cinematographers, or editors in Film Production; as content creators, influencers, or digital producers in Social Media Fields; as strategists or brand managers in Digital Marketing; as animators or motion graphic designers in Animation & VFX; as copywriters, art directors, or media planners in Marketing and Advertising; as producers, editors, or on-screen talents in Broadcast Media; as digital experience designers in UX Design fields. Creating impactful documentaries in Documentary Filmmaking or producing promotional materials and contents for Corporate Media or starting production companies or media studios as Entrepreneurs are some more examples of abundant career tracks our graduates can easily choose from. With their unique blend of creative and technical expertise, SMFP graduates are also prepared to adapt to emerging roles in the digital economy, making them valuable assets in any media-driven industry.

Undergraduate Program in Korean AI Business

“Ensure your professional success in Korea with our Korean AI Business program!”

Program Description

Korean AI Business program at Kyungdong University Global is composed of two integrated components: Artificial Intelligence and Business Management and Communication. This program aims to prepare international students to be unique professionals with practical qualifications in the emerging fields of AI and applications, deep knowledge of Korean culture, history, economy, politics, as well as competencies in business operations and management. The program curriculum offers well- designed courses in the fields of AI, Korean Corporate Culture, Multicultural Business Ethics, International Business and Communications. Upon successful completion, our students are provided with ample employment opportunities in Korea!

Career Opportunities

Korea has developed into an economic powerhouse and is well-known for its rapidly spreading culture around the world. This ensures exceptional career opportunities for the international students graduating from the Korean AI Business course at KDU Global. Our graduates can work as AI experts and professionals in the field of business management and marketing in Korea or abroad.

K-Global Graduate School of Business and Technology Convergence

KDU Global Graduate School of Business and Technology Convergence (GSBTC) offers the following graduate degree programs for international and domestic students:

- Master of Engineering in Artificial Intelligence and Data Science
- Master of Arts in International Business Administration
- Master of Arts in International Hospitality and Tourism Management

All courses are delivered entirely in English. The curriculums offer interdisciplinary convergence-tailored learning and are designed to meet the industry demands for professionals in the fields of business, computing technologies, and global hospitality.

In addition to all the support and care services offered by KDU Global, including part-time job placement, international students at GSBTC are provided extensive scholarships covering up to 100% of their tuition expenses both upon admission and during their studies!

GSBTC also closely collaborates with prominent graduate schools in Australia, USA, Canada, Europe, and Asia in terms of study abroad, exchange, and dual degree opportunities for students.



Graduation Credit Distribution:

Students must accumulate the required number of graduation credits from the designated Core, Major Elective, and Convergence Elective Courses:

| Programs / Courses | Courses | Major Elective Courses | Convergence Elective Courses | Total |
|--|-----------|------------------------|------------------------------|------------|
| Artificial Intelligence and Data Science | 9 credits | 12 credits | 9 credits | 30 credits |
| International Business Administration | 9 credits | 12 credits | 9 credits | 30 credits |
| International Hospitality and Tourism Management | 9 credits | 12 credits | 9 credits | 30 credits |

| | | |
|---|-------------------|----------------------|
| Classroom Loading: 1 day(6-9 hours) / week | Number of Weeks | 15 Weeks / Semester |
| | Number of Courses | 2 Courses / Semester |
| | Classroom Hours | 6 Hours / Week |
| | Class Days | 1 Day / Week |

Career Opportunities

Our GSBTC graduates are nurtured with a unique blend of skills that unlock a wide range of career opportunities at the forefront of advancing technologies and business and hospitality industries. Among many, examples of professions the graduates can pursue include Business Analyst, Technology Consultant, Product Manager, Data Scientist/Analyst, Chief Technology Officer (CTO), Digital Transformation Manager, Entrepreneur or Startup Founder, Operations Manager, Marketing Technologist, Financial Technology Specialist, or Innovation Manager.

Career placement services are guaranteed for students upon their successful graduation from the Graduate School of Business and Technology Convergence at KDU Global!

- Duration of Study:
 - Research Track: 4 semesters (2 years)
 - Coursework Track: 5 semesters (2.5 years)
- Medium of Instruction: English (100%)
- Scholarships: Up to 100% each semester



K-Global

Education Center

KDU Global offers specialized, intensive language training programs (English Language for Academic Purposes and Korean Language for Academic Purposes) for international students who plan to join the undergraduate degree programs but lack the required levels of English or Korean proficiency. The Center also delivers various Vocational and Short Courses for international students, working professionals, and undergraduate and graduate students around the world.

Why Language Training at KDU Global

- Classes are taught by professional instructors based on well-designed curriculums targeting the distinct and individual needs of students.
- Programs are enriched with various cultural activities.
- Students are eligible for part-time job assistance and employment during their studies.
- Students are exposed to family-like care and a multicultural environment.
- Successful students qualify for admission to the KDU Global degree programs.
- Outstanding students are provided exclusive scholarship opportunities for their undergraduate studies at KDU Global.

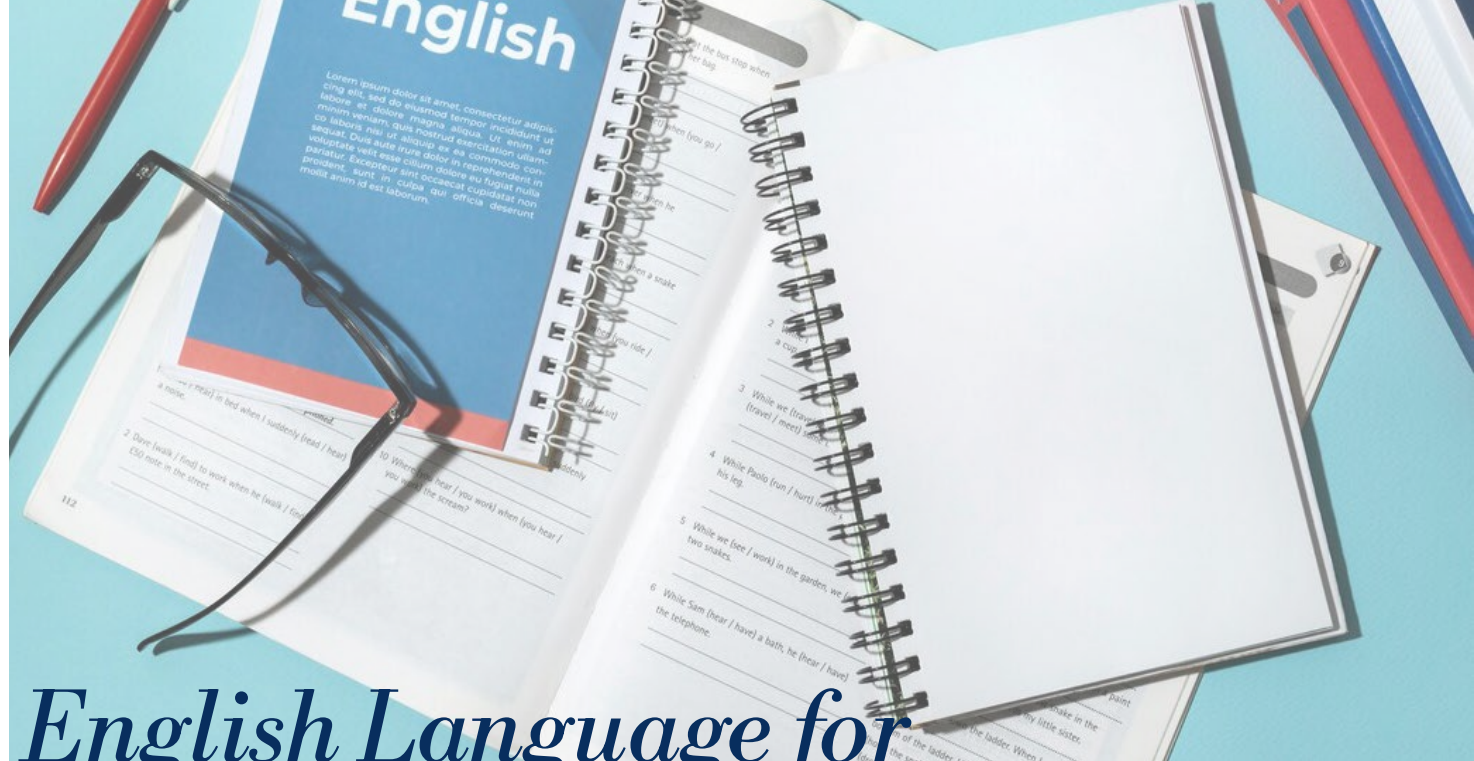


EAP

English Language for Academic Purposes (EAP) is an intensive language training program designed for those who wish to improve their English proficiency and be eligible for admission to the English-medium undergraduate degree programs at KDU Global.

The program consists of two integrated components focusing on enhancing the academic and general language skills of students for an English-medium university environment as well as preparing them for the IELTS examination.

International students can apply for EAP admissions all year round without official English proficiency certificates. The eligibility of applicants will be assessed based on an interview and a written test administered by KDU Global.



English Language for Academic Purposes

Program Outline

| | | | | |
|------------|---|--------------------|--------------------|--------------------|
| Components | Academic English | | IELTS Training | |
| Classes | Listening, Reading, Speaking, Writing, Grammar, Vocabulary, IELTS | | | |
| Terms | Term 1 10 Weeks | Term 2 10 Weeks | Term 3 10 Weeks | Term 4 10 Weeks |

KAP

Korean Language for Academic Purposes

The [Korean Language for Academic Purposes \(KAP\)](#) program is intended to prepare the students for daily communications, interactions, and academic comprehension in a Korean university environment.

The students will learn essential grammar, vocabulary, reading and writing skills in Korean as well as cultural aspects of studying and residing in the country. Successful graduates will be eligible for admission to the Korean-medium undergraduate degree programs at KDU Global.

The program is for the students who can already demonstrate commitment to learn and improve their Korean language skills. Students must pass the designated preliminary assessment by KDU Global to be eligible for admission.



| Program Outline | | | | |
|-------------------|---|--------------------|--------------------|--------------------|
| Program Duration | 6 months ~ 2 years | | | |
| Compotents | Korean Communication, Culture, Grammar, Vocabulary, Speaking, Reading, Writing, TOPIK | | | |
| Classroom Loading | 9:00 am to 1:00 pm (4 hours/day, Mon.-Fri.) | | | |
| Terms | Term 1 10 Weeks | Term 2 10 Weeks | Term 3 10 Weeks | Term 4 10 Weeks |



KDU Global

Vocational and Short Courses

KDU Global periodically hosts specialized vocational training courses, cultural and international networking programs. The programs provide unique opportunities to students, practitioners, and industry professionals to discover Korean culture, establish networks, and participate in skills-oriented technical and academic workshops, lectures, events, and seminars with specific intended learning outcomes.

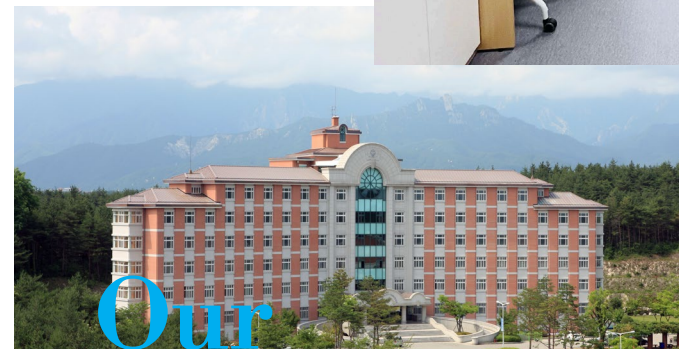
[KDU Global Immersion Program \(KGIP\)](#) is an annual event hosted during summer/winter vacations at Kyungdong University Global. KGIP brings hundreds of international and Korean students together for an opportunity to build international networks, experience various cultures and values, and enhance language, interpersonal, and career-tailored professional skills through customized courses, exciting events, trips, and activities. The program has gained immense popularity among thousands of university students around the world.

[KDU Global Vocational and Short Courses](#) are designed to meet the professional training needs of practitioners and students in particular areas with promising industry applications and career prospects.

[Korean Immigration and Integration Program \(KIIP\)](#) is a unique program conducted by Korean Immigration institutions for foreigners to acquire the basic knowledge about Korean language and culture for them to easily adapt to the Korean society. Participation in the program is highly competitive and limited. As KDU Global is formally designated as a KIIP Learning Center, all international students can enjoy the privileges offered upon the completion of KIIP if they wish to apply for residence or employment visas in Korea after their graduation from KDU Global!



KDU Global *Campus Facilities*



Our Library

The Woodang Library holds about 200,000 books, supported with an information search system and visual information desk. This modern facility, designed based on the European concept, was launched in November 2010 with a goal to provide a pleasant academic atmosphere for the students.

Our Dormitories

KDU Global offers fully-furnished dormitories for international students. The dormitory buildings have systematic structures with wide lobbies and modern facilities such as cafeteria, convenience store, fitness centre, table tennis room, laundry area, multi-purpose rooms, study zones, TV lounges, ATMs, and vending machines. Our KDU Global students enjoy the breathtaking views of Seorak Mountain and the East Sea.



KDU Global Campus Life

Fun and sports provide the much-needed balance to work and study. KDU Global offers a wide variety of sport facilities including football and cricket fields, gymnasias, tennis, squash and basketball courts, fitness center, taekwondo, dance and yoga training rooms. All indoor and outdoor facilities offer complete sets of necessary equipment and tools. Over 20 international students clubs and associations operate at KDU Global!





Our Cafeterias

KDU Global cafeterias offer a variety of Korean and international cuisines at affordable prices. The campus canteen, named 'Lilac,' is committed to delivering the highest quality meals and services to our students coming from various countries. Cafe 'Globe' offers menus from all continents around the world for the convenience and comfort of our students for them to feel 'home' at KDU Global.





KDU Global offers an array of facilities, including prayer rooms, curated international culture center, and various student lounges. These facilities collectively enhance the academic milieu, exemplifying our commitment to fostering a globally minded, technologically advanced, and culturally enriched educational setting.

KDU Global Career Development Center

The [Career Development Center \(CDC\)](#) at KDU Global supports international students with comprehensive services in two areas: (i) part-time job support during their studies and (ii) employment and career support after their graduation.

Employment and Career Support

The CDC also ensures that all KDU Global graduates are presented with various educational and employment opportunities both in Korea and abroad. Specifically, through the CDC services:

- KDU Global graduates are supervised to join the graduate programs at KDU Global's partner universities in various regions, including the USA, Canada, Australia, Europe, with exceptional benefits.
- KDU Global graduates are provided with comprehensive support in obtaining employment and residence visas in Korea, including E-7 (professional employment visa), D-10 (job seeking visa), F-2-R (regional specialization foreign talent visa), etc.
- KDU Global graduates are networked with industries and other alumni both domestically and internationally.

Part-time Job Support

KDU Global practices a unique part-time job support system for international students, who wish to engage with local businesses, communities, and enhance their Korean skills and understanding of local lifestyle without compromising their education and extracurricular activities.

International Student Services Center (ISSC) – a specially designated division of the International Office at KDU Global, helps students with the entire process of finding and formalizing part-time jobs. Services include recommending students for local businesses with vacancies, guiding with permissions from the local immigration office, providing Korean language training materials, reporting changes in job places, ensuring safety and security at potential workplaces, protecting the rights of students, and many more.

Process:



Eligibility:

The international students at KDU Global must meet the part-time job support eligibility requirements related to class attendance and academic performance. The support is available for undergraduate and graduate students from their first semesters, whereas those in language programs are eligible after their first six months of stay in Korea.

KDU Global is the only university in Korea with a comprehensive part-time job support system for international students!

Global Student Mobility

‘Global Network of Higher Education for Student Mobility’

“ When it comes to higher education, we do not want to limit the opportunities for students geographically. It is becoming increasingly critical to let the students move around the world freely to get educated and trained in a well-coordinated academic environment and expose them to the international community and industry. Globally mobile students can learn better and more about different cultures, languages, and industry practices to be better prepared for their future. Despite many legal and administrative barriers hindering this in different countries, we endeavor to eliminate them by expanding our educational network worldwide. We welcome everyone who is ready to join our mission for the best interest of their students and for the sake of better education. ”

Prof. Dr. John Kyu Lee
President, KDU Global

*We lead the world
with new traditions!*





KDU Global
International Collaboration

KDU Global has established partnership agreements with educational institutions, student recruitment agencies, and international organizations around the world. The international collaboration programs range from traditional student and staff exchange, double degree courses in the fields of business, computing technologies and hospitality, vocational training sessions to annual joint conferences and symposiums and innovative initiatives on global student mobility. In a short period of time, the partnership projects have been recognized as role models with outstanding implementations and results in various regions, including Central Asia, East Africa, Southeast Asia, Latin America, and Europe.

‘Student Recruitment Agencies’

Partnership proposals are accepted all year round. The detailed guidelines and information related to proposal submissions and agency appointments can be found here (scan the QR code):



KDU Global launched [Global Student Mobility Project \(GSMP\)](#) in 2016 by networking prominent higher educational institutions under a united vision of providing competitive international education and worldwide career opportunities to students. The GSMP network has expanded into over 80 countries connecting millions of students around the world.





KDU Global Student Services

KDU Global stands out for its exceptional array of comprehensive services, catering to diverse needs of students, ensuring a thriving academic and personal experience during their studies:



Intensive Student Care and Counseling Sessions



Student Engagement and Study Support Programs



Dormitory Settlement and Safety Trainings



Facility Support for Multi-Faith Student Communities



Local Community Engagement projects



Airport Pick-up on Arrival



Health insurance Registration



Opening Bank Account



Comprehensive Orientation Sessions



Part-time Job Assistance



Cultural Integration Programs



Support with E-Resources and LMS



Korean law and Immigration Information Sessions



On-campus Language proficiency Exams and Registration Support



Career training and Workshop



Transportation Services and Essentials Shopping for Newly Arrived Students



KDU Global

Scholarships for International Students

Among all universities and colleges in Korea, KDU Global stands out with the highest ratio and scope of scholarships and financial aid for international students. Scholarships cover up to 100% of tuition, dormitory and living expenses in each semester. All international students at KDU Global study with scholarships.

Scholarships and Aids Available for International Students

| | |
|---|---|
| Scholarship at Admission | Granted to international students admitted to degree programs at KDU Global. - Undergraduate and graduate students. - Range: up to 100% of tuition fee. |
| Scholarship for Academic Excellence | Granted to full-time international students with distinct academic performances in degree courses at KDU Global. - Undergraduate and graduate students. - Range: up to 100% of tuition fee |
| KDU Global Citizen Scholarship | Granted to students who uphold core principles in discipline, moral values, and intercultural harmony. - Undergraduate and graduate students. - Range: 30% of tuition fee |
| KDU Global Scholarship | Granted to outstanding students from selected OECD and Latin American and the Caribbean countries. - Undergraduate and graduate students. - The scholarship covers 100% of tuition and on-campus dormitory fees for the first semester. |
| KDU Global Academic Collaboration Center (GACC) Scholarship | Granted to international students transferring to KDU Global from its partner institutions. - Undergraduate and graduate students. - Range: up to 100% of tuition fee. |
| KDU Global - Inter University Council for East Africa (IUCEA) Joint Scholarship | Based on mutual agreements and collaborative projects contributing to the human capital and socio-economic development in the following East African Community partner countries: Burundi, Kenya, Rwanda, South Sudan, Tanzania, Uganda, Democratic Republic of Congo, Somalia. Undergraduate level students only. The scholarship is granted in two mutually exclusive tiers on a merit basis: - Tier I: Covers 100% of the tuition fees for up to four years and on-campus dormitory fees for up to two years. - Tier II: Covers 100% of the tuition fee for the first semester. |
| K-Global Education Center Scholarship | K-Global Education Center Scholarship is granted to international students who successfully complete the language training programs - English Language for Academic Purposes (EAP) or Korean Language for Academic Purposes (KAP) - and enroll in undergraduate degree courses at KDU Global. - EAP and KAP students. - Range: Covers up to 100% of tuition fees in the first semester of enrollment. |
| Part-time Job Assistance | KDU Global provides off-campus and on-campus part-time job assistance for international students, in partnership with local businesses, to enhance their cultural understanding, language proficiency, and give them a chance to practice their classroom knowledge and skills in actual industry settings. |
| Teaching Assistant Scholarship | International students enrolled full-time in the graduate courses at KDU Global are granted Teaching Assistant (TA) Scholarships. - Eligibility: Graduate degree students - Form: Monthly allowance |

Detailed descriptions and eligibility requirements for the scholarships and financial aids as well as information on fees and estimated cost of living can be seen here:

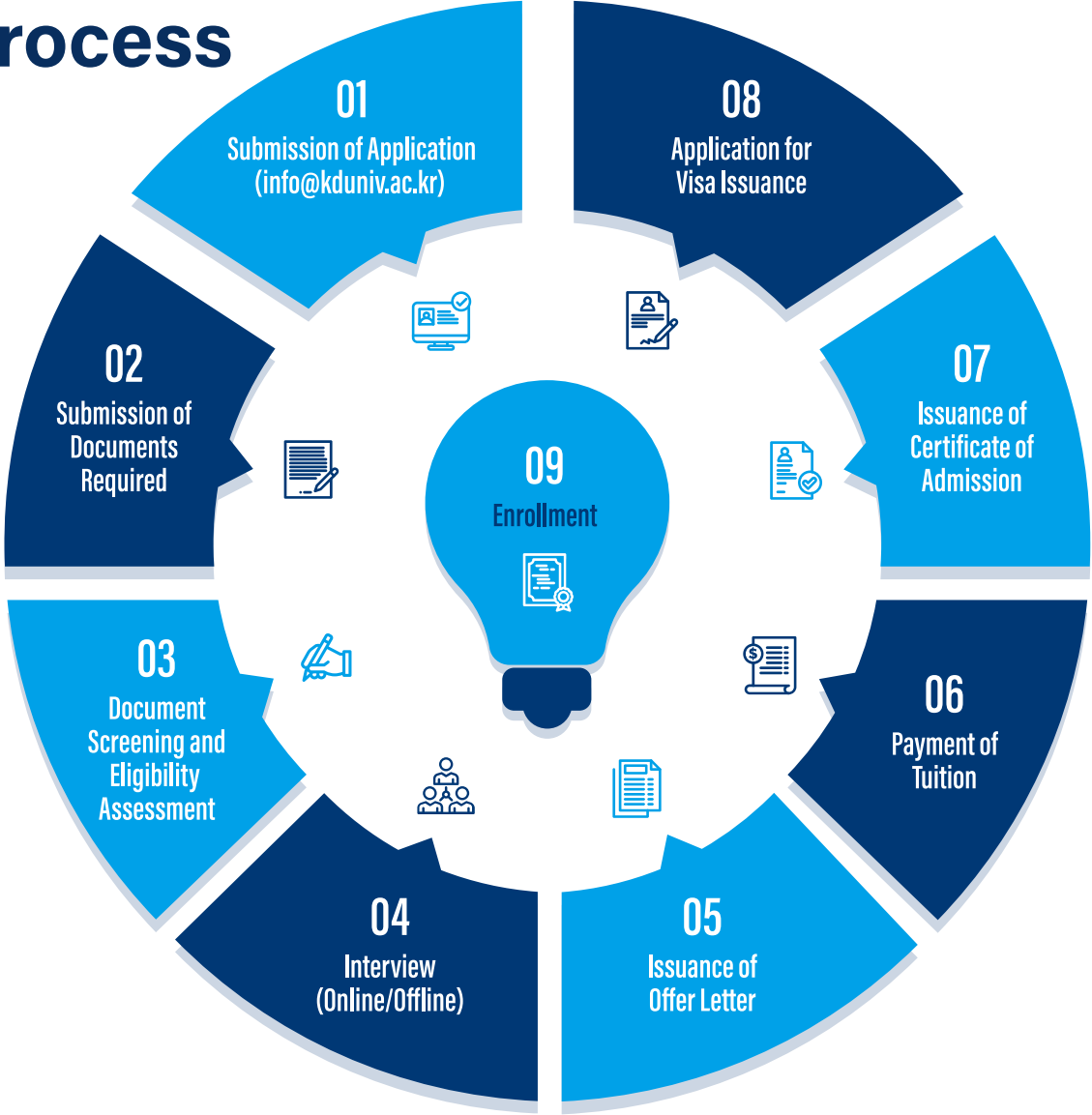




How to Apply

*Required documents must be sent to info@kduniv.ac.kr for initial screening and further guidance.

Application Process





Contacts:

 info@kduniv.ac.kr

 <https://kduglobal.ac.kr>

 [prof.john.k.lee](https://www.facebook.com/prof.john.k.lee)

