

# Undergraduate Admission

for Fall 2026 / Spring 2027



**POSTECH**

## University of the Pathfinders

1<sup>st</sup>

The First  
Bilingual Campus  
in Korea

1<sup>st</sup>

The First and Best  
Research-oriented  
University  
in Korea

2<sup>nd</sup>

THE World's  
Best Small  
Universities  
2024

9<sup>th</sup>

THE Young  
University  
Ranking  
2024



# To infinity and Beyond

The most striking feature about POSTECH, apart from its international high-ranking in science and technology, is the availability of advanced research equipments.

Francis Okello Odongo Ngome  
(Kenya, MA/DR, Materials Science and Engineering)



# Undecided Major Curriculum

All undergraduate students are admitted to the MUEUNJAE School of Undergraduate Studies. MUEUNJAE (Korean: 무은재, Chinese: 無垠齋) means "there are no boundaries in knowledge". Here at POSTECH, the future scientists proceed through the undecided major curriculum for three semesters before choosing their major.

## SOPHOMORE

Before 4th Semester (Choice of Major)

## SOPHOMORE

3rd Semester (Science&Technology Core Subjects)

## FRESHMEN

1st~2nd Semester (Exploration of the 11 Majors)



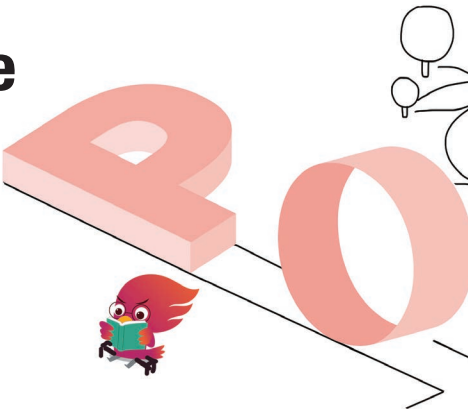
## Undergraduate Program

**Mueunjae School of  
Undergraduate Studies**



- Mathematics
- Physics
- Chemistry
- Life Science
- Materials Science&Engineering
- Mechanical Engineering
- Industrial & Management Engineering
- Electrical Engineering
- Computer Science&Engineering
- Chemical Engineering
- Convergence IT Engineering

# Application Guideline



## Admission Tracks

Admission Tracks	How to Apply	Application Period	Results Announcement	Semester Begins
International Admissions I	Apply at Study In Korea website (www.studyinkorea.go.kr)	26 <sup>th</sup> September – 3 <sup>rd</sup> November 2026	5 <sup>th</sup> January 2026	End of August 2026
International Admissions II				
Global Korea Scholarship (GKS)	Post documents to university or embassy	From September 2025	December 2025	(After 1 year of language course) February 2027

※ Important information and schedules related to admission are subject to change, and the details will be provided on the official website.  
Please refer to <https://adm-iu.postech.ac.kr>.

## Evaluation Criteria

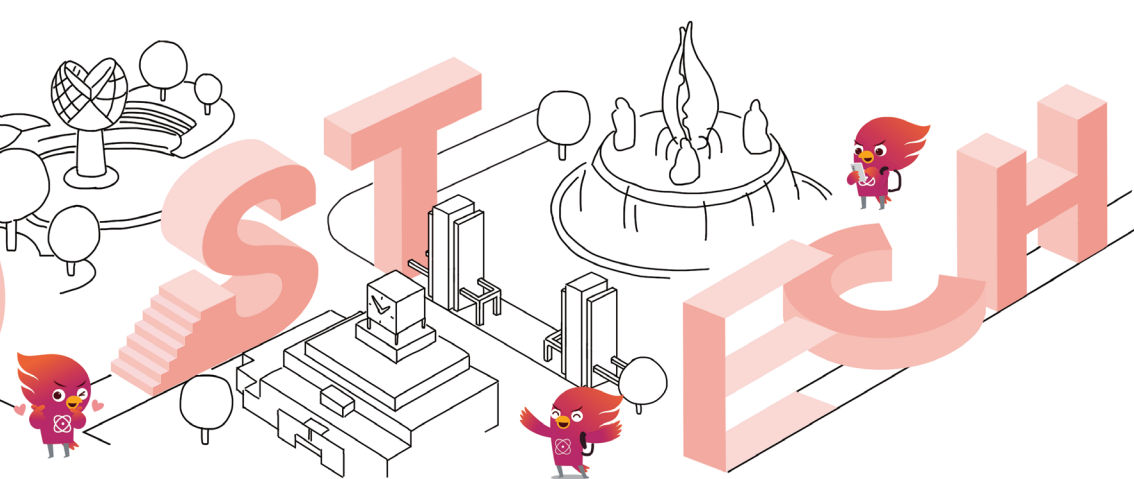
### Academic Achievement

Qualification based on the science, technology, engineering and mathematics (STEM) subjects and language proficiency (English)



### Potentiality

Qualities and skills in STEM areas  
—  
Academic enthusiasm and attitude  
—  
Social relationships



## Eligibility

Admission Tracks	Eligibility on Nationality
International Admissions I	Applicants and their parents must hold foreign citizenship
International Admissions II	Applicants (including overseas Koreans, foreigners, and international marriage migrants naturalized to Korea) must have completed their entire education course from 1st grade of elementary school to 12th grade of high school outside of Korea.
Global Korea Scholarship (GKS)	Refer to Study In Korea website

## Required Documents

### Mandatory

- Proof of eligibility
- English proficiency scores(no minimum requirement)
- Official graduation certificate OR certificate of expected graduation(with expected date of graduation) and official transcript
- Recommendation letter
- Personal statement

### Optional but Recommended

- Standardized test scores (SAT, ACT, IB, AP, A-level, etc.)
- Explanatory statement / supporting documents
- School profile
- Supplementary materials (honors, awards, volunteer work, club activities, etc.)

※ The complete list will be posted on the official website. Please refer to <https://adm-iu.postech.ac.kr>.

# Scholarships & Support

## The Best Scholarships for the Best Talents

- Arrival Scholarship** POSTECH offers airfare to Pohang for all new international students who have not lived in Korea within past 6 months.
- Living Allowance** All international students will receiving monthly living allowance that covers meal, transportation, dormitory fee and other living expenditure.
- Tuition Waiver** All students receive a full tuition waiver starting from the first semester. If a GPA of 2.0/4.3 or higher is achieved each semester, the tuition waiver will continue for the next semester. (up to 8 semesters)
- GKS Scholarship** Students can apply as a GKS scholar via the GKS university/embassy track. The scholarship includes air fare, tuition, and living stipend, etc. Please refer to the Study in Korea website for detail.



### ⊕ POSTECH Exclusive

#### Pathfinder Voucher & Digital Scholarship

All students are given Pathfinder Voucher of 10million KRW after 3 semesters, and can use it for their preferred activities or personal development. Furthermore, all students are given the Digital Scholarship for Freshmen, which refers to the cutting-edge digital devices for academic use.

## International Students Support

POSTECH International Student and Scholar Services(ISSS) supports the students with arrival, visa&immigration, settling in, cultural excursions and any living-related issues.

An academic advisor and student advisors will be assigned to each student, helping them successfully adapt to the university and Korean culture. As a respect for cultural diversity, we provide variety of foods including halal food and vegetarian dietary at student cafeteria, and an on-campus prayer room.







adm-iu.postech.ac.kr



@postech.global

*Value Creating University*

**POSTECH**

POHANG UNIVERSITY OF SCIENCE AND TECHNOLOGY

## POSTECH Admission Office

#231 Tae-joon Park Digital Library, 77 Cheongam-Ro,  
Nam-gu, Pohang, Gyeongbuk, Korea 37673

✉ [postech-iuadmission@postech.ac.kr](mailto:postech-iuadmission@postech.ac.kr)

☎ +82-54-279-3610

