



\*Scan the QR Code to visit the International College Website

# SPECIALIZED ACADEMIC PROGRAMS FOR INTERNATIONAL STUDENTS

Empowering future global professionals through practical training and cross-cultural competence



## K-Culture Education

A major program exclusively for international students, aimed at **fostering global professionals**.  
The curriculum covers a wide range of subjects, including Korean Studies, business, interpretation and translation, computer literacy, and cultural content production.

- A curriculum that develops both Korean language proficiency and practical professional skills
- Academic and extracurricular exchange programs with students from various countries
- The most popular major among international students at BUFS



## Global Studies

All courses are delivered in English.  
Students learn key knowledge in Korean studies, Global Business, Global Connectivity and Global Technology. Students can choose one concentration among the four areas.

- All classes are taught in English
- Many faculty members are international professors with expertise in global business
- Active exchange programs with multinational students, both in and outside the classroom

### (1) International College

Division	2025 Academic Year	Notes
College	International College	
Major	Global Studies	English-Only, for both domestic and international students
	K-Culture Education	Korean-Only, for international students

### (2) International College Curriculum by Major

Major	K-Culture Education	Global Studies
Curriculum Area	(1) Korean Conversation (2) Korean Communication Skills (3) Business Korean (4) Korean Society through Media (5) Understanding Korean Culture & Society	(1) International Business (2) Financial Management (3) Electronic Commerce (4) Entrepreneurship and Start-up (5) Global Communication and Korean Culture (6) Artificial Intelligence Utilization (7) Global Communication and Korean Culture



## 100% Guaranteed Major of Your Choice

# Open Major System

- ✓ Explore different fields in your first year and choose your major in the second year.
- ✓ Your preferred major is 100% guaranteed, with the option to change each semester.
- ✓ Build a competitive career through interdisciplinary studies.

### Curriculum Structure of the Open Major System

#### First year - Career Discovery

①

New students are part of the **International College** and spend their first year identifying their strengths through career exploration and major experience programs.

##### Key Features

- Personalized English-intensive courses using AI-based platforms
- Training to collaborate with artificial intelligence and digital technologies
- Leadership education to develop innovative future-oriented thinking
- Character education with guidance from faculty and senior students
- Option to take courses in interested majors

②

At the end of the first year (second semester), students apply for their first major (Major 1), which becomes their **official primary major**.

- Students may also apply for a second major (Major 2), although it is not required when entering the second year.
- Major 1 and Major 2 can be added or changed every semester from the second to fourth year. If graduation requirements are met, students can switch between their majors at the time of graduation.

#### Second year - Career Development

①

From the second year, students focus on developing academic depth in their selected fields. BUFS requires students to complete at least two majors before graduation.

②

To support student growth, BUFS operates a **Flexible Semester System**, which allows students to participate in programs such as: Career exploration semesters, Employment skill-building and job preparation, Industry internships, Study abroad or global exchange semesters.



# BUFS: A University Where International Students Thrive

**“From admission to graduation,”**

BUFS provides a comprehensive **one-stop support system** to ensure international students can successfully adapt, grow, and succeed.

## 01. Integrated Support Center for International Students

- Personalized assistance in all areas, including admissions, academics, daily life, and career development

## 02. Tandem Cultural Exchange Program

- Opportunities for language exchange and cultural activities with Korean students

## 03. Community-Based Engagement Programs

- Participate in global cultural understanding programs and traditional Korean cultural experiences

## 04. Tailored Academic Programs for International Students

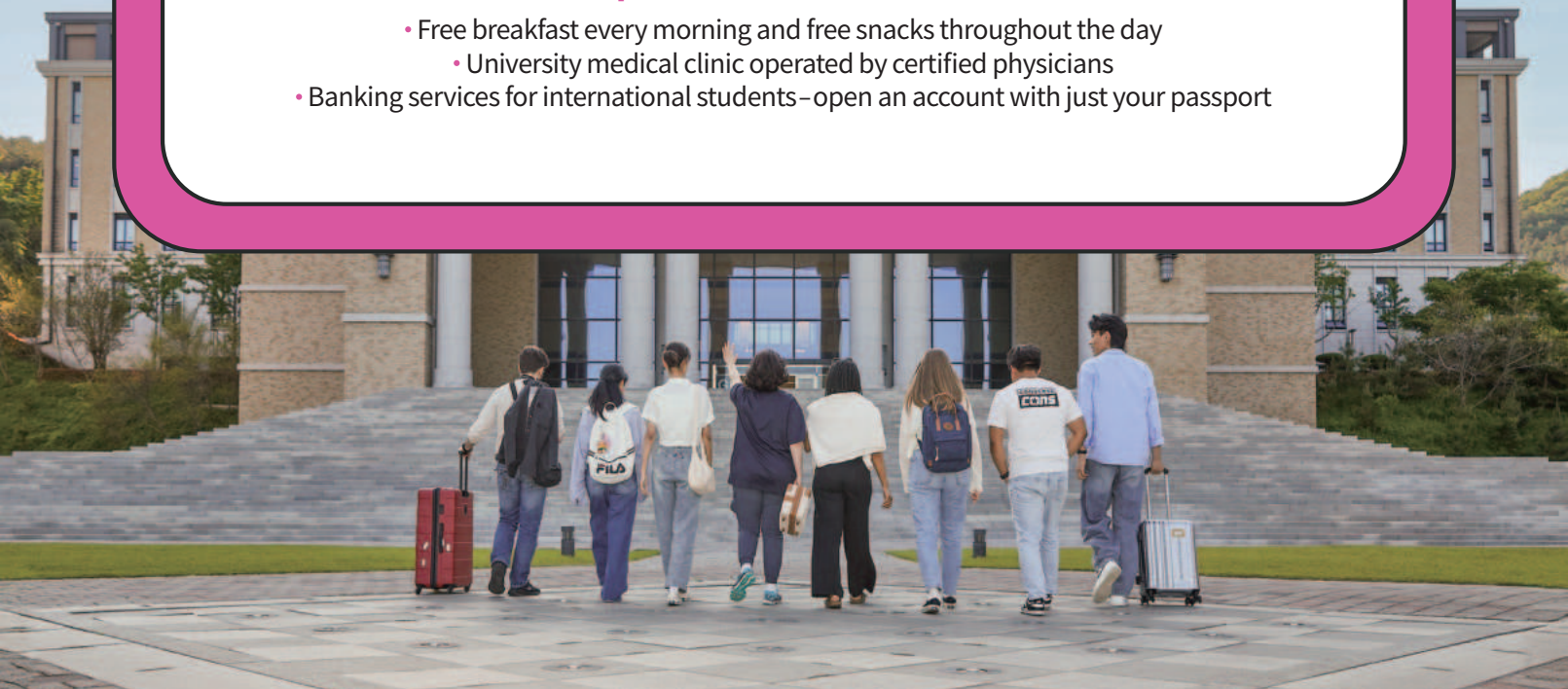
- Expansion of English-taught courses and introduction of dual degree opportunities

## 05. Visa and Employment Counseling

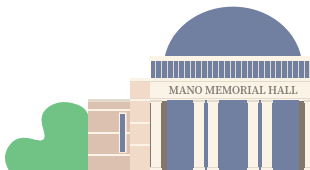
- Step-by-step support from visa application to post-graduation employment

## 06. Campus Welfare & Infrastructure

- Free breakfast every morning and free snacks throughout the day
  - University medical clinic operated by certified physicians
- Banking services for international students – open an account with just your passport



# International Student Career Roadmap to Success in Employment



## STEP 01. Arrival & Initial Settlement

- Assistance with visa issuance, alien registration, health insurance, airport pickup, and dormitory check-in
- Welcome ceremony and orientation for new international students
- Customized onboarding services by language and region (school and local life information provided)



## STEP 02. Academic Development Skill Building

- Academic consulting and personalized study support
- Psychological counseling and language-specific mentoring
- International students-only courses (The liberal arts curriculum including common courses for international students)
- Tandem course, Tandem zone, ink zone operation (Korean mentoring with Korean professors and students / English mentoring with foreign professors)



## STEP 03. Global Outgoing Program

- Long- and short-term exchange and language training programs (2+2, 3+1, 7+1, SAP)
- Overseas volunteer and global internship opportunities
- Participation in BUFS Global Campus and tandem-based Cultural exchange programs (BUFS Culture Center, World Culture Festival, Global Culture Experience, Language Exchange, Korean Cultural Workshops)
- Dual degree curriculum and academic programs with partner universities (Hanlim University of Foreign Studies, Ho Chi Minh University of Finance and Economy, apporo National University, Nagasaki University, etc.)



## STEP 04. Career Exploration & Job Preparation

- Personalized career counseling (includes MBTI and career assessment tools)
- Resume and interview preparation workshops held twice annually
- Extracurricular programs to enhance employment skills (Resume writing, professional communication for interviews, etc.)



## STEP 05. Graduation & Career Support

- Career seminars, employment camps, and industry matching programs
- Job placement support for domestic and international companies (including visa extension consultations)
- Post-graduation alumni network development and continued career support

## Contact & Support

International Student Support Team, Busan University of Foreign Studies

E-mail	lesokwon@bufs.ac.kr
Phone	+82-51-509-5322
undergraduate admissions	admissionu@bufs.ac.kr
graduate admissions	admissiong@bufs.ac.kr



# Busan University of Foreign Studies Graduate School Admission Guide

## ■ Graduate School Programs

Graduate Schools	Course of Study	Faculty	Department(major)
General Graduate School	Master's	Humanities	English Language and Literature(English Track) / Global Japanese Studies / Chinese Language and China Studies / Korean Studies / Korean Language Education / Multi-Cultural Education / Global Area & Language Studies / Glocal Business Administration / Korean Vietnamese Translation Studies / Global Finance&Business / Global Languages, Cultures and Missionary Practice / Artificial Intelligence Marketing
		Convergence	Convergence Research for Glocal problems
		IT/Engineering	AI Convergence(English Track) / Smart Convergence Security
		Sports	Sports Fitness Convergence / Sports Medicine
	Doctorate	Humanities	English Language and Literature(English Track) / Global Japanese Studies / Chinese Language and China Studies / Korean Studies / Multi-Cultural Education / Global Area & Language Studies / Global Area & Language Studies / Glocal Business Administration / Korean Translation / Global Finance&Business
		IT/Engineering	AI Convergence(English Track) / Smart Convergence Security
		Sports	Sports Fitness Convergence
	Combined Master's and Ph.D	Humanities	English Language and Literature(English Track) / Global Japanese Studies / Chinese Language and China Studies / Korean Studies / Korean Language Education / Multi-Cultural Education / Global Area & Language Studies / Glocal Business Administration / Global Finance&Business
		IT/Engineering	AI Convergence(English Track) / Smart Convergence Security
		Sports	Sports Fitness Convergence
Graduate School of Translation	Master's	Humanities	Korean-English / Korean-Japanese / Korean-Chinese
Graduate School of Education	Master's	Sports	Athletics Education
Graduate School of Industry & Management	Master's	Humanities	Social Welfare and Counseling
		Natural Science	Integrative Medicine / Natural Agricultural Forest Therapy
		Sports	Security Guard & Martial Arts / Pilates Rehabilitation / Golf Studies / Beauty Exercise Rehabilitation / Yoga Wellness Science

## ■ Graduate School Eligibility

### (1) Eligibility by Program

Program	Details
master's	<ul style="list-style-type: none"> <li>★ Those who have obtained or are expected to obtain a bachelor's degree from a domestic or overseas university (college)</li> <li>★ Those who are recognized as having equivalent qualifications under other relevant laws</li> </ul>
Combined Master's and Ph.D	<ul style="list-style-type: none"> <li>★ Those who have obtained or are expected to obtain a bachelor's degree from a domestic or overseas university (college)</li> <li>★ Those who are recognized as having equivalent qualifications under other relevant laws</li> </ul>
Ph.D	<ul style="list-style-type: none"> <li>★ Those who have obtained or are expected to obtain a master's degree from a domestic or overseas university (college)</li> <li>★ Those who are recognized as having equivalent qualifications under other relevant laws</li> </ul>

### (2) Language Requirements

- Must possess one of the following language proficiency scores: TOPIK Level 4 or above, or English proficiency test scores: TOEFL PBT 550, CBT 210, IBT 80, IELTS 5.5, or TEPS 550  
※ However, for the following programs: Korean Language Education (Master's/Doctorate), Multicultural Education (Doctorate), Korean Studies (Doctorate), TOPIK Level 5 or higher is required.
- Holders of BUFS in-house TOPIK Level 4 are also accepted.  
※ However, for the same programs listed above, TOPIK Level 5 or higher is required.
- Applicants from countries where English is the native language may be exempt from submitting an English language test score.
- Applicants who do not submit a language proficiency certificate within the application period will be evaluated through a language proficiency interview to determine their eligibility for admission.
- Applicants to other language-specific programs must either hold TOPIK Level 2 or higher, or have completed two semesters (6 months) at the BUFS Korean Language Center. Their eligibility will be verified based on additional criteria or an interview.

## ■ Graduate Scholarships

Category	Eligibility		Benefits
General Graduate School	1. Excellent International Students (Master's) 1) TOPIK level 6 2) Undergraduate GPA 4.3 or higher 3) GPS 4.16 or higher for the entire period of study at BUFS 4) Graduates from BUFS or BUFS partner universities, or Korean related majors		50% off the admission fee 100% tuition waiver (for 4 semesters)
	2. General International Students 1) Those who do not meet criteria above "1" - Korean Government Scholarship Program (GKS) applicants	Graduates of BUFS	New students : 50% off the admission fee, 100% tuition waiver Current students : 50% tuition waiver
		Graduates of other universities	New students : 100% tuition waiver Current students : 50% tuition waiver
		Graduates from universities in countries not approved by the Ministry of Justice	New students : 30% tuition waiver Current students : 50% tuition waiver
Education Graduate school	International graduates of BUFS		50% off the admission fee / 30% tuition waiver
	International graduates from other universities		30% tuition waiver
	※For non-Curriculum for Teaching Profession program applicants, the General Graduate School's scholarship policy for international students will apply.		
Translation Graduate School	International graduates of BUFS		50% off the admission fee / 30% tuition waiver
	International graduates from other universities		30% tuition waiver
Industry and Management Graduate School	International graduates of BUFS		50% off the admission fee / 50% tuition waiver
	International graduates from other universities		50% tuition waiver

## ■ Graduate School Tuition (2025 Academic Year)

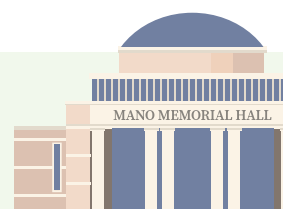
Graduate Schools	admission fee	Humanities 1	Humanities 2	Humanities 4	Natural Science	IT Engineering	Sports	Sports 2
General Graduate School (Master's)	600,000 (416)	4,838,000 (3,323)	5,009,000 (3,441)		5,638,000 (3,873)	6,278,000 (4,311)	5,638,000 (3,872)	
General Graduate School (Doctorate)		5,091,000 (3,496)			5,915,000 (4,062)	6,397,000 (4,360)	5,915,000 (4,062)	
General Graduate School (Combined Master's and Ph.D)		4,989,000 (3,426)			5,803,000 (3,985)	6,348,000 (4,188)	5,803,000 (3,985)	
Graduate School of Education		3,726,000 (2,559)	4,657,000 (3,198)	3,874,000 (2,660)	—	—	—	
Graduate School of Translation		4,726,000 (3,245)			—	—	—	
Graduate School of Industry & Management		3,757,000 (2,580)				4,579,000 (3,145)	4,579,000 (3,145)	4,579,000 (3,145)
Golf Studies is subject to the tuition rate of the Graduate School of Industry & Management								

※ Based on the February 2025 exchange rate and subject to change depending on fluctuations

## ■ Contact

Phone : 051-509-5329/5369

Email : [admissiong@bufs.ac.kr](mailto:admissiong@bufs.ac.kr)



# Korean Language & Culture Education Center, Busan University of Foreign Studies



## Regular Korean Program

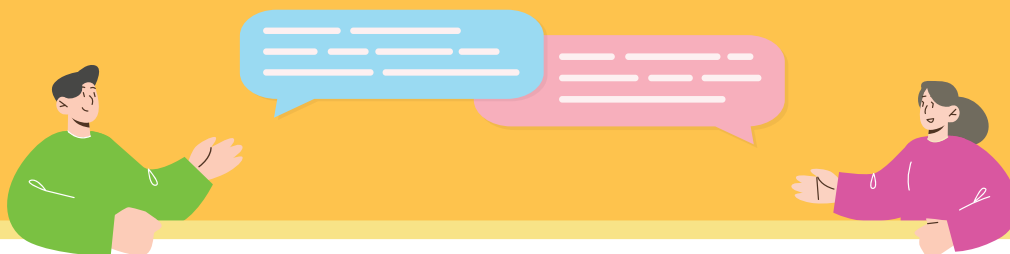
This program offers level-based Korean language and culture classes, focused on improving learners' abilities through a student-centered approach.

- Monday to Friday / 4 hours per day / 10 weeks per semester / Total 200 hours
- Courses offered from Level 1 (Beginner 1) to Level 6 (Advanced 2)
- Education focused on communication skills: reading, writing, listening, and speaking
- Special classes by level, including pronunciation, TOPIK, current issues, projects, literature, and Korean studies
- Operation of a homeroom teacher system, academic counseling, and Korean language buddy program

## Short-term Korean Program

This program aims to improve Korean conversation skills and provide cultural experiences in a short period of time.

- 3-week intensive Korean language and culture program
  - Korean Language: Conversation-based practical expression classes
  - Korean Culture: Hands-on cultural experiences, field trips, and interaction with Korean students
- 1 to 4-week customized Korean language & culture program
  - Programs are designed according to the needs of overseas universities or external institutions
  - Sample components: <Korean Language Classes> <Field Trips> <Tutoring> <Company Visits> <Student Council Exchange Projects, etc.>



### ■ Eligibility for Admission

Applicants must have graduated from high school or hold an equivalent academic qualification

### ■ Application Process

Submit application documents ▶ Document screening ▶ Notification of result & tuition invoice issued  
▶ Tuition payment & confirmation ▶ Certificate of Admission issued ▶ Visa application  
▶ Arrival & Orientation ▶ Semester begins

## ■ 2025 Academic Year Schedule – Regular Program

Category	Application Period	Program Period	Total Hours
Spring	Dec 3, 2024 (Tue) ~ Jan 13, 2025 (Mon)	Mar 4, 2025 (Tue) ~ May 14, 2025 (Wed)	200 hours
Summer	Mar 10, 2025 (Mon) ~ Apr 4, 2025 (Fri)	May 19, 2025 (Mon) ~ Jul 25, 2025 (Fri)	200 hours
Fall	Jun 2, 2025 (Mon) ~ Jul 4, 2025 (Fri)	Sep 1, 2025 (Mon) ~ Nov 14, 2025 (Fri)	200 hours
Winter	Aug 25, 2025 (Mon) ~ Sep 26, 2025 (Fri)	Nov 20, 2025 (Thu) ~ Jan 30, 2026 (Fri)	200 hours

## ■ 교육 과정 운영표



## ■ Tuition

Tuition Fee Per Semester				Textbooks
Application Fee	tuition waiver	Insurance	Total	
50,000	1,300,000	80,000	1,430,000	40,000

## ■ 2025 Academic Year Schedule – Short-term Program

Category	Program Period	Category	Program Period
Summer	Jul 7, 2025 (Mon) ~ Jul 25, 2025 (Fri)	Winter	Jan 5, 2026 (Mon) ~ Jan 23, 2026 (Fri)
	Aug 4, 2025 (Mon) ~ Aug 22, 2025 (Fri)		Feb 2, 2026 (Mon) ~ Feb 13, 2026 (Fri)

## ■ Short-term Program Overview

### January / July Sessions

- 60 hours of Korean conversation classes
- 4 cultural experience sessions
- 2 corporate visits
- 1 visit to cultural heritage sites

### February / August Sessions

- 60 hours of Korean conversation classes
- 4 cultural experience sessions
- 2 student exchange activities
- 1 visit to cultural heritage sites

※  
For more details, please visit  
<http://klce.bufs.ac.kr>

