

SJC

SUNCHEON JEIL COLLEGE

顺天第一大学

Soaring to the future! Soaring to the world! A cradle for
creative talents with commendable character!

向着未来飞翔! 向着世界飞翔! 具备真正人品的创意人才摇篮!



SUNCHEON JEIL
COLLEGE

**A college that teaches well!
A college that is strong in students'
employment!
Suncheon Jeil College**

- 451 students employed at large enterprises
(Samsung, Hyundai, LG, SK, GS, POSCO) (last 3 years)
- Scholarship per student [KRW 1.62 million]
- Government grants KRW 10.1 billion (last 3 years)

**教学质量优秀的大学! 拥有就业优势的大学!
顺天第一大学**

451人就职于大企业(三星、现代、LG、SK、GS、浦项制铁等)(最近三年)
人均奖学金受惠金额【162万韩元】
政府财政支援金受惠金额为101亿韩元(最近三年)



Since 1979

SUNCHEON JEIL COLLEGE



Contents

- 04_Message from the President
校长欢迎词
- 05_Founding Spirit, Educational
Philosophy, Educational Goals
成立理念、校训、教育目标
- 06_History 大学沿革
- 07_Organization 大学组织图
- 08_Academics 系别简介
 - Engineering 工业系列
 - Humanities and Social Science 人文社会系列
 - Natural Science 自然科学系列
 - Education and Welfare 教育福利系列
 - Healthcare 保健系列
 - Arts and Sports 文体系列
- 20_Facilities 大学校内简介
- 22_Talent Award of Korea 荣获韩国人才奖
- 23_Scholarship 大学奖学金
- 24_About Suncheon City 顺天市简介
- 25_Campus Map 校园指南
- 26_Directions 来访路线



Welcome to Suncheon Jeil College. Suncheon Jeil College is

located in Suncheon, Jeollanam-do, an educational and ecological city as well as the center of Korea's national industrial complex based on the Gwangyang Bay region. Over the course of approximately 40 years since its foundation in 1979, Suncheon Jeil College has produced around 40,000 professionals; thus contributing to the development of the local community and the country. This achievement would not have been possible without the support of the local community and alumni. I would like to extend our deepest gratitude to all those who have been supporting and encouraging the development of Suncheon Jeil College.

Our goals are clear.

In the era of the Fourth Industrial Revolution, Suncheon Jeil College will faithfully fulfill its role as an institution that fosters field-customized talents. In addition, by securing identity that differentiates us from other colleges, we will continuously make efforts to discover new educational resources by inviting overseas students, among others, to make up for the reduction in the size of the school-age population. As an outcome of the performance-centered education, Suncheon Jeil College will strive to establish itself as a "college that teaches well" and "a college that is strong in students' employment."

Suncheon Jeil College President Seong Dong-je

欢迎大家!

我们大学坐落在全罗南道顺天，顺天既是教育和生态城市，也是光阳湾圈国家产业园区中心城市。1979年建校以来，40余年间共输出了约四万余名专业职业人，为地区社会和国家发展做出了贡献。这些教育成果离不开地区社会和校友们的支持，再次向对我们大学寄予厚爱和鼓励的所有人表示感谢。

我们目标明确。

为迎接第四次工业革命时代，作为培养基于地区社会的现场针对型人才的机构，将忠实履行职责。此外，确保与周围大学的差异化特性，同时因学龄人口减少，也将坚持不懈地致力于发掘留学生等全新教育资源。凭借这种以成果为主的职务教育的结果，努力发展为教学质量优秀的大学、拥有就业优势的大学!

顺天第一大学校长 成 东 济

Founding Spirit

To provide all people with an opportunity for learning with “Sacred Heart,” help them develop qualities as democratic citizens and abilities as professionals, and consequently foster genuine talents contributing to the country and the world

成立理念

以真诚的圣洁之心为所有人开启学习之路, 培养作为民主市民的资质和专业人士的能力, 并培育为国家发展和人类社会做贡献的实在人才。

Educational Philosophy

Creativity, sincerity, service spirit

校训

创意、诚信、奉献

Educational Goals

- A cultured person with commendable character
- To foster cultured talents with commendable characters and values
- A dedicated person who practices service
- To foster talents with service-minded leadership to practice sharing with joy
- A technician with creative ability
- To foster technicians with professional knowledge, specialized skills, and creative abilities to contribute to society
- A versatile global talent
- To foster self-directed talents with enterprising spirit and international capacities

教育目标

- 具备真正人品的有教养之人
- 培养符合普遍标准的有教养之人应具备的品性和价值观。
- 进行实践的奉献之人
- 培养用分享的乐趣进行实践的具备奉献领导力的人才。
- 具备创意性职业能力的技术之人
- 培养具备专业知识和技术, 为社会做贡献的创意性职业能力。
- 融入世界的全面之人
- 培养具备进取思维及国际能力的自我主导型人才。



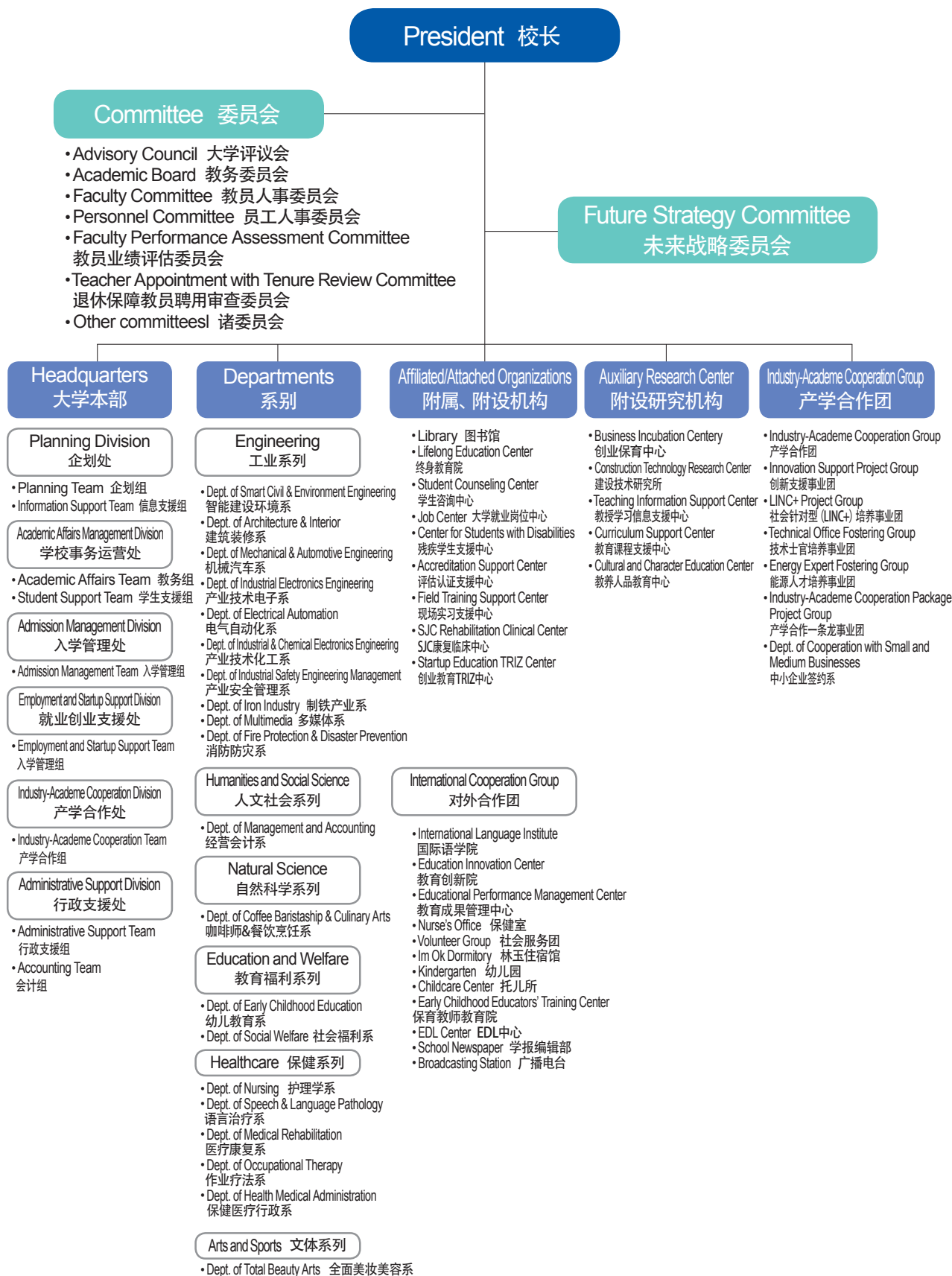
History

- 1979.03.14 Suncheon Technical College opened, admitted 544 new students
- 1981.02.24 Produced 385 graduates
- 1982.04.02 Seong Im-ock took office as the second chairperson
- 1995.01.24 Completed construction of library (approx. 1,600m²)
- 1998.05.01 Changed name to Suncheon Jeil Technical College
- 2000.05.17 Founded the Social Welfare Group
- 2003.03.15 Declared operation of the Chamsaram Character Education Program
- 2012.02.01 Changed name to Suncheon Jeil College
- 2013.03.01 Designated as outstanding college in academic system improvement
- 2014.02.19 Held the Im Ock Dormitory opening ceremony
- 2016.11.24 Won the Talent Award of Korea 2016 (7th time)
- 2018.03.01 Opened the consignment education center (Suncheon Penitentiary Baedeul Campus)
- 2018.09.01 Ahn Hyo-seung took office as the 13th President
- 2019.03.01 Selected for the college innovation support project (2019 - 2021)
- 2019.03.01 Selected for the college accreditation project (2019 - 2023)
- 2019.12.07 Won the Korea Rural Talent Sharing Award (Presidential Award)
- 2019.03.01 Selected for phase 2 of the Leaders in Industry-University Cooperation (LINC+) project
- 2019.04.02 40th anniversary
- 2019.10.22 Held the Industry-Academe Cooperation EXPO and Innovative Design Contest
- 2020.02.12. 40th graduation ceremony (1,088 graduates, accumulated: 42,326)
(associate degree: 984 bachelor's degree: 45 bachelor's degree for Intensive Course: 54, Associate Degree through Academic Credit Bank System: 16
Bachelor's Degree through Academic Credit Bank System: 5)
- 2020.03.02. New Students in 2020 : 1,237
(Day: 1,034 Night: 176 Intensive: 57)

大学沿革

- 1979.03.14 顺天工业专科学院建校, 544名新生入学
- 1981.02.24 输出第一届毕业生385人
- 1982.04.02 第二任理事长成林玉女士就任
- 1995.01.24 图书馆竣工 (1500余坪)
- 1998.05.01 校名变更为顺天第一学院
- 2000.05.17 创建社会服务团
- 2003.03.15 真正人品教育项目宣布仪式及运营
- 2012.02.01 校名变更为顺天第一大学
- 2013.03.01 被指定为学校事务制度改善优秀大学
- 2014.02.19 林玉住宿馆开馆仪式
- 2016.11.24 2016年荣获韩国人才奖 (荣获七次)
- 2018.03.01 开设 (韩国唯一) 产业体委托教育场 (顺天监狱培德校园)
- 2018.09.01 第13任校长安孝昇先生就任
- 2019.03.01 获选专科学院创新支援事业 (2019~2021)
- 2019.03.01 获选专科学院机构评估认证学院 (2019~2023)
- 2019.12.07 荣获韩国农村才能分享大奖 (总统奖)
- 2019.03.01 获选社会针对型产学合作第二阶段先导专科学院培养事业 (LINC+)
- 2019.04.02 建校40周年纪念
- 2019.10.22 产学合作学术博览会及创新型设计比赛
- 2020.02.12 第40届学位授予人数共1088人, 累计毕业生42326人
(专业学士984人、学士学位45人、专业深化课程学士54人,
学分银行制专业学士16人、学分银行制学士5人)
- 2020.03.02. 2020学年度入学人数: 1237人
(白天: 1034人, 夜间: 176人, 专业深化: 57人)

Organization



A college where
students are happy

学生幸福的大学



Since 1979

SUNCHEON JEIL COLLEGE

Departments 系别简介

Engineering 工业系列

- Dept. of Smart Civil & Environment Engineering 智能建设环境系
- Dept. of Architecture & Interior 建筑装修系
- Dept. of Mechanical & Automotive Engineering 机械汽车系
- Dept. of Industrial Electronics Engineering 产业技术电子系
- Dept. of Electrical Automation 电气自动化系
- Dept. of Industrial & Chemical Electronics Engineering 产业技术化工系
- Dept. of Industrial Safety Engineering Management 产业安全管理系
- Dept. of Iron Industry 制铁产业系
- Dept. of Multimedia 多媒体系
- Dept. of Fire Protection & Disaster Prevention 消防防灾系

Humanities and Social Science 人文社会系列

- Dept. of Management and Accounting 经营会计系

Natural Science 自然科学系列

- Dept. of Coffee Baristaship & Culinary Arts 咖啡师&餐饮烹饪系

Education and Welfare 教育福利系列

- Dept. of Early Childhood Education 幼儿教育系
- Dept. of Social Welfare 社会福利系

Healthcare 保健系列

- Dept. of Nursing 护理学系
- Dept. of Speech & Language Pathology 语言治疗系
- Dept. of Medical Rehabilitation 医疗康复系
- Dept. of Occupational Therapy 作业疗法系
- Dept. of Health Medical Administration 护保健医疗行政系

Arts and Sports 文体系列

- Dept. of Total Beauty Arts 全面美妆美容系

Dept. of Smart Civil & Environment Engineering 智能建设环境系

Students learn the basic theories and practical affairs of social infrastructure planning, design, construction, and maintenance, such as those on the intelligent transportation system that makes up a smart city, new and renewable energy smart grid, 3D spatial information platform, and smart water grid.

By obtaining professional knowledge as a smart construction engineer -- such as for drone surveying, spatial information development, BIM design, and 3D printing -- and as a smart environmental management engineer to resolve environmental issues including particulate matter, water pollution, and climate change, students develop into experts in the civil and construction engineering fields so they can work at government organizations in the Yeosu National Industrial Complex and for tourism belt development projects in the Gwangyang Bay region and South Coast area as well as for private construction companies.

针对构建智慧城市的智能型交通体系系统、新再生能源智能电网、三维空间信息平台、智能水网等社会基础设施的规划、设计、施工及维护管理,学习基本理论及现场实务。通过学习无人机测量及空间信息构建、BIM设计、3D打印施工等与第四次工业革命技术相结合的智能建设工程师,以及解决微尘减少、水质管理和气候变化等环境问题的智能环境管理工程师应具备的专业知识,在丽水国家产业园区、阳光湾圈及南海岸旅游带开发基础上,培养以设施岗公务员、综合及专业建筑师等身份进军土木建设领域的专业人才。



네이버 카페 cafe.naver.com/sfccivil

Dept. of Architecture & Interior 建筑装修系

The study of architecture and interior began with the start of human history. At the Dept. of Architecture & Interior, students learn about architectural structures as well as architectural planning, design, construction, and supervision processes. The Dept. of Architecture & Interior provides customized education to help students develop design and construction abilities to create various spaces necessary for human life as required in the field. Through individually customized education and group study activities, students receive specialized education on traditional architecture -- in which the level of interest is increasing -- in addition to securing basic qualities as interior designers and construction engineers. As a result, students are provided with increased opportunities for employment. As the income level increases, the demand for premium interior design grows along with the demand for rebuilding and remodeling as well as for IoT-applied smart building and construction. As such, the study of architecture and interior design has bright prospects.

建筑装修是伴随着人类历史出现的一门学问,是学习建筑物的规划、设计、施工、监理、结构等的学问。为学习人类生活所需的各种空间创造的设计能力、施工能力等,正在开展现场所要求的针对型教育,通过激活针对个人的教育和小组学习,确保作为设计师及施工技术人员应具备的基本资质并开展目前关注度提高的与传统建筑相关的特色教育,以此拓展就业渠道,随着收入水平的提高,高档装修的需求、重建及翻建的需求也在增加,作为与IOT相结合的智能建筑智慧城市建设等,是前景非常光明的一门学问。

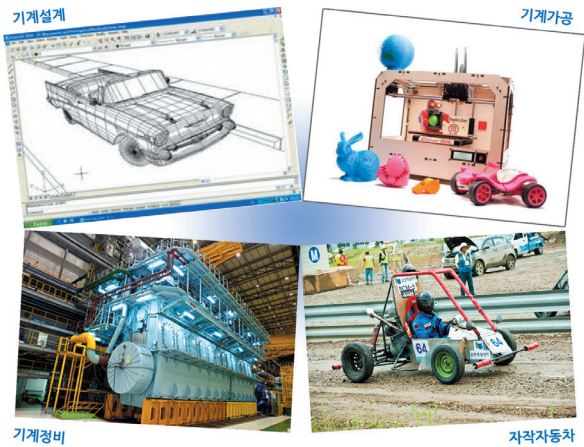


네이버 카페 cafe.naver.com/sfcarchi/

Dept. of Mechanical & Automotive Engineering 机械汽车系

Students learn about mechanical maintenance, mechanical facilities, automobile maintenance, and automobile inspection, and they can work in steel, plant, and automobile industries after graduation. The key licenses acquired by students include those for mechanical maintenance, welding, automobile maintenance, and industrial safety and engineering. For employment in the petrochemical fields, students also obtain qualifications as technicians for gas and hazardous materials. After graduation, students proceed to work at steelmaking, automobile manufacturing, and automobile maintenance and inspection companies as well as electronics divisions of large enterprises -- such as Samsung and LG -- and mechanical maintenance divisions of major companies at the Yeosu Industrial Complex.

学习机械维修、机械设备、汽车维修及检测相关内容，毕业后可在钢铁领域、全套设备产业领域、汽车产业领域就业，学生将取得的主要资格证为机械维修及焊接、汽车维修、产业安全产业技师等，为在石油化学领域就业，也将取得危险物品、燃气技师资格。毕业后可从事的领域是制铁相关企业、汽车制造企业、汽车维修检测相关企业，同时也可积极进军三星、LG之类的大企业电子公司及丽水产业园区主要企业的机械维修领域。



네이버 카페 cafe.naver.com/sfccar

Dept. of Industrial Electronics Engineering 产业技术电子系

Fosters professional talents in embedded electronics, information and communications through IoT application and plant automation
The longest history and tradition in the eastern part of Jeollanam-do for the electronics and ICT fields
Graduates working at large enterprises in the region, such as those located in the Yeosu Industrial Complex as well as PosHiMetal
Students finding employment across the country in electronics, ICT, semiconductor, automation, and computer operation-related fields
Promotes students' employment through cooperation with POSCO and companies in the Yeosu Industrial Complex
Provides state-of-the-art educational facilities and lab equipment
Provides creative engineering, patent management, and Triz-related education for venture businesses and startups

本学科培养嵌入式职务电子、IoT职务信息通信、工厂自动化相关专业人才
拥有关于全罗南道东部地区电子、信息通信领域最悠久的历史 and 传统
毕业生就业范围活跃在光阳制铁、丽川产业园区等地区内大企业
可在全国范围内的电子、信息通信、半导体、自动化设备、计算机运用相关领域就业
激活与地区内的浦项制铁、丽川产业园区等相关合作企业的就业联系
学科内拥有最尖端的教育设施和实验实习装备
提供为风险创业准备的创意工程、专利管理及TRIZ相关教育

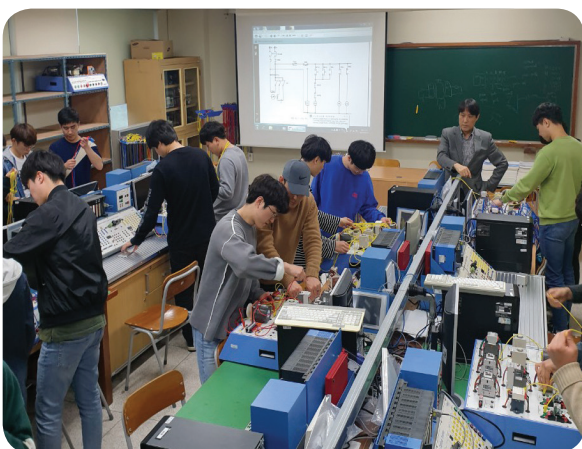


네이버카페 <http://cafe.naver.com/sfctel>

Dept. of Electrical Automation 电气自动化系

The Dept. of Electrical Automation fosters industrial talents in the electrical construction, electrical facility management, control and measurement engineering, mechanical and electrical control system, mechatronics, and plant automation fields on the basis of electrical and control engineering. Students also receive education on plant automation control panel design, microcomputer and microprocessor design, and Auto CAD and OR CAD technologies for electrical, mechanical, and control engineering as necessary for plant automation and in industrial sites. Customized education for employment is also provided, such as that aimed at helping students obtain qualifications as mechanical maintenance, iron making/steelmaking/rolling, and hazardous material handling technicians.

电气自动化系是以电气工程和控制工程为基础，培养电气施工、电气设备、控制计测、机械电气控制系统、机电一体化、工厂自动化相关产业人才的学科。此外，为开展产业现场及工厂自动化所需的电气、机械、控制领域的教育，教授工厂自动化控制盘设计技术、微机及微处理机设计技术、机械图纸 (Auto CAD) 及电气图纸 (OR CAD) 等内容，同时还开展机械维修、制铁制钢滚轧、危险物品技师等就业针对型特色教育。



네이버 카페 cafe.naver.com/sfcelec.cafe

Dept. of Industrial & Chemical Electronics Engineering 产业技术化工系

The goal of education is to foster hybrid-type technological experts in chemical engineering (chemical, hazardous materials) and industrial (safety, production, quality) technologies and capable of responding to the era of the Fourth Industrial Revolution and actively leading the future.

To attain such goal, the Dept. of Electrical Automation trains students to develop practical abilities necessary in the industrial sites and abilities to handle problems systematically through system adjustment. Ultimately, it aims at developing talents qualified to work in the fields of high demand in the future.

目的在于培养能够应对第四次工业革命时代，并主动引领未来的化工（化学、危险物品）和产业技术（安全、生产、质量）相融合的混合型专业技术人才。为此，根据产业现场的实务能力及系统化的问题解决方法，教授协调生活和系统的问题解决能力，最终培养具备符合未来需求工种所需资格的人才。



네이버 카페 cafe.naver.com/goscqm

Dept. of Industrial Safety Engineering Management

产业安全管理系

The Dept. of Industrial Safety Engineering Management is one of a kind in Korea, fostering safety and public health managers. It develops industrial accident prevention and work environment management experts by providing students with opportunities for safety management field training and volunteer work.

The Dept. of Industrial Safety Engineering Management pursues the development of field-customized safety managers based on the spirit of creative innovation and fostering of talents with commendable character. It also aims at creating a safe country and a happy life for both workers and their families.

本学科是全国唯一培养安全管理员、保健管理员的学科，输出产业灾害预防和作业环境管理专家，通过安全管理、现场实务体验学习等，凭借高就业率专业技术志愿服务活动，培养预备安全人才。

产业安全管理系培养基于创意创新、真正人才培养的现场针对型安全管理员，是追求安全韩国、劳动者和家人等所有人幸福人生的学科。



네이버 카페 cafe.naver.com/edvolun

Dept. of Iron Industry

制铁产业系

Training professional technological human resources to work in the iron and steelmaking industries, it provides field-centered practical education that is required at the industrial sites in line with the advancement of the steel industry in Korea.

The educational objective is to foster professional engineers for iron and steelmaking processes as required by the iron and steel industries, customized human resources through cooperation with local companies, and future-oriented experts through curriculum based on national competency standards and education to nurture outstanding talents with creativity and commendable character.

本学科培养从事制铁和制钢产业的制铁工厂专业技术人才，根据韩国制钢产业的发展，开展制钢、金属产业所需的现场实务型专业教育。

教育目标是培养制钢产业所需的制铁工艺专业技术人才、与地区产业体相联系的针对型人才、运营基于国家职务能力标准的教育课程、通过创意和人品教育培养未来型人才。



네이버 카페 <http://cafe.naver.com/scsteel>

Dept. of Multimedia 多媒体系

Students improve their communication abilities based on creative ideas by working with various media. Through this process, students develop into experts who discover, produce, and manage a wide range of content.

The Dept. of Multimedia fosters web design experts by helping students master everything about web design, advertising, image creation, and content development using multimedia and providing them with education on shopping mall layout design, Dreamweaver, and HTML5/CSS. It aims at fostering competitive multi-players capable of creating websites and at designing, developing, and operating creative content to ensure user convenience by using the latest technologies based on professional design and content development education.

本学科处理计算机的多种媒体，提高以创意性想法为基础的沟通实现能力，培养发掘内容并进行制作管理的专家。换言之，就是掌握与利用多媒体的网站设计、广告、视频、内容开发相关的一切，教授购物中心版面设计、梦想编织者、HTML5/CSS，培养负责网站设计的专家。以专业的设计教育和内容开发教育为基础，顺应新技术和环境，主要致力于制作考虑到用户便利性的网站并开发划时代的内容，打造能够对此进行设计并运营的人才，培养具备竞争力的全能型人才。



cafe.naver.com/scmpege

Dept. of Fire Protection & Disaster Prevention 消防防灾系

Students are provided with education on advanced and field-centered fire safety technologies; thus developing into experts in the field of fire protection, such as firefighters and engineers handling fire facilities and hazardous materials that protect human lives and properties from fire accidents and disasters. The Dept. of Fire Protection & Disaster Prevention fosters professional human resources through education based on the NCS curriculum and practical courses in the field.

本学科以实务为主，教授先进的消防安全技术，培养保护生命和财产免受各种火灾、爆炸及灾难危害的消防公务员，以及消防设备及危险物品等消防领域的专家。通过基于NCS教育课程的教学科目运营体系和现场实习课程，培养创意性现场实务型专业消防人才。



cafe.naver.com/scjeilfire119/

Dept. of Management & Accounting

经营会计系

With customized curriculum, the Dept. of Management & Accounting fosters next-generation leaders who are capable of responding to changes in the management environment for the service, financial, and accounting industries.

On top of basic academic, character, and vocational education to fulfill the educational goals of the college, it provides courses to help students acquire licenses and qualifications required in the field along with education to improve cultural attainments and expertise in their respective fields of major. The Dept. of Management & Accounting aims at motivating students to display their potential to the fullest; thus developing them into competent financial officers, general affairs managers, and accounting officers required in the field.

培育能够适应经营环境变化的新一代经营领导者, 作为针对型教育课程, 培养服务产业、金融产业、会计领域的人才。

学校的教育目标是树立正确的职业观, 为此, 以基本素养、基础数学能力、职业基础及职业教育为基础, 遵循以取得资格证和专业素养教育为主的教育课程运营体系。本学科的目标是接受产业体的要求并赋予能够唤醒学生潜在能力的学习动机, 输出能够履行现场职务的金融业务员、总务人事业务员、会计业务员。



cafe.naver.com/scmanda

Dept. of Coffee Baristaship & Culinary Arts

咖啡师&餐饮烹饪系

The Dept. of Coffee Baristaship & Culinary Arts develops creative field-centered talents for the coffee baristaship, culinary, and baking fields.

It aims at developing technical experts for the food service and culinary industries that contribute to national health by providing students with field-oriented curriculum and Chamsaram character education.

本学科培养咖啡师、烹饪领域及烘焙领域的创意性现场实务型人才。

换言之, 就是以餐饮产业及饮料服务领域的实务为主, 通过多种教学课程和真正人品教育, 培养为国民健康做贡献的创意性现场实务型技术专业人才。



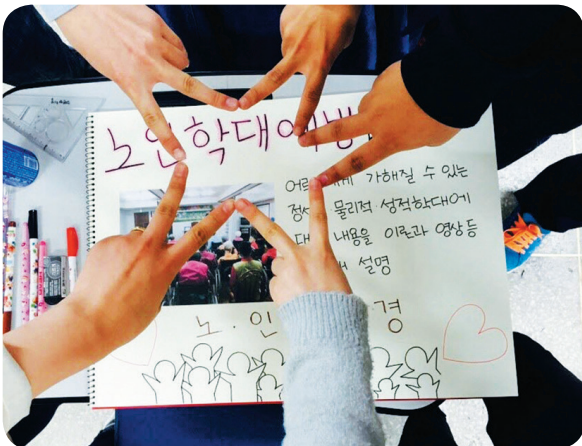
cafe.daum.net/jeilculinary

Dept. of Social Welfare(2-year, 4-year)

社会福利系(两年制、四年制)

Given the Fourth Industrial Revolution and the trend of urbanization, the modern industrial society is exposed to various challenges and risks (child birth and care, unemployment, aging, poverty, illness, and death). The people who help others facing such risks are called social welfare experts. The Dept. of Social Welfare fosters various social welfare experts, such as social workers, early childhood educators, youth instructors, and youth counselors. The Dept. of Social Welfare pursues "ubiquitous welfare" -- which applies to all areas of human life including homes and schools -- rather than welfare service that is limited to social welfare centers or facilities. As part of the "School-to-Work" program for social workers, the Dept. of Social Welfare offers a four-year course on the study of social welfare (intensive course). It also provides a field-centered curriculum that helps students acquire national qualifications, such as those for social worker grade 1, youth counselor grade 3, and health & family specialist.

第四次工业革命和城市化等导致现代产业社会出现了多种欲求并存在由此而产生的社会危险(分娩、养育、失业、高龄、贫困、疾病、死亡等)。为处于这种社会危险中的人提供帮助的专家被称为“社会福利专家”，本学科培养社会福利师、保育教师、青少年指导员、青少年咨询师等各种专家。社会福利系所追求的不是仅限于社会福利机构或设施的福利服务，而是均衡渗透至家庭或学校等我们生活的所有领域的福利，即普适(ubiquitous)福利。此外，本学科作为社会福利师继续教育(school to work)的一环，开设并运营4年制社会福利学系(专业深化课程)，同时还运营可取得一级社会福利师和三级青少年咨询师、健康家庭师等各种国家资格的现场针对型教育课程。



다음카페 cafe.daum.net/scfc-socialwelfare

Dept. of Early Childhood Education

幼儿教育系(三年制)

The Dept. of Early Childhood Education fosters competent early childhood educators to lead the knowledge and information society of the 21st century as experts in early childhood education theories, so they can help in the holistic development of children in educational and childcare sites. It develops professionals who can actively respond to the rapidly changing society and who have the qualifications and character required of early childhood educators as well as professional knowledge and practical abilities in the field. The Dept. of Early Childhood Education aims at producing talents equipped with both creativity -- which is required in the knowledge-based society -- and the view of ethics to respect others.

本学科培养引领21世纪知识信息化社会、精通专业幼儿教育理论，在教育、保育现场帮助幼儿全面发育的有能力的婴幼儿教师。培养主动应对剧变的社会，具有幼儿教育现场要求的兼具专业知识和现场实务能力的幼儿教师应具备的资质和品性的专业人才。目的在于培养兼具符合知识社会的创造性思维和尊重人的伦理观的人才。



<https://cafe.naver.com/jeilnurseryeducation>

Dept. of Health Medical Administration

保健医疗行政系(三年制)

The Dept. of Health Medical Administration fosters professional technical talents capable of efficiently carrying out health information management, medical insurance claim and review, and hospital administration and coordinator operations by providing students with education on professional knowledge of health and medical administration and medical records.

It aims at fostering professional human resources to lead the advancement in the health and medical administration field.

本学科通过学习保健、医疗行政及医务记录相关的专业知识，培养可有效执行保健信息管理业务、医疗保险申请及审查业务、医院行政管理业务、医院协调员业务的专业人才。

换言之，其目的在于培养引领保健行政领域先进化的专业人才。



다음 카페 cafe.daum.net/health-medical

Dept. of Medical Rehabilitation

医疗康复系(三年制)

1. Prosthetics and Orthotics Major

Prosthetics and orthotics technician was selected as one of the ten promising occupations of the future by the Samsung Economic Research Institute and Korea Institute of S&T Evaluation and Planning. Students develop into assistive technology professionals for the rehabilitation of people with disabilities and senior citizens in addition to prosthetists and orthotists who create digital, computer-assisted, and rehabilitation prosthetics and orthotics to replace impaired physical functions.

2. Rehabilitation Major

Students develop into rehabilitation experts who help people suffering from musculoskeletal diseases including those on rehabilitation after a sports injury, spinal rehabilitation, rehabilitation of shoulders and upper limb joints, and rehabilitation of knees and lower limb joints and post-operative patients as well as exercise specialists working with patients suffering from adult diseases caused by obesity or those seeking to improve spinal health.

1.假肢辅助器专业

获选由三星经济研究所和韩国科学技术评价院评选的未来价值十大有潜力工种，培养制造代替失去的身体部位或功能的电子假手、计算机假腿、康复辅助器的假肢辅助器技师，以及残疾人、老人等的专责康复专家辅助工程师。

2.康复专业

本学科培养针对运动损伤后康复、脊椎康复、肩膀及上肢关节康复、膝盖及下肢关节康复、术后患者等肌肉骨骼系统疾病患者的康复专家，并培养针对因肥胖而引起成人病患者的运动治疗专家，以及针对脊椎健康的运动治疗专家。



네이버카페 <http://cafe.naver.com/oandp>

Dept. of Occupational Therapy (3-year)

作业疗法系(三年制)

The Dept. of Occupational Therapy fosters experts who assess, treat, and train people with physical and mental disorders so as to help them live independently and fulfill their given roles in their local communities.

It aims at developing occupational therapists equipped with professional knowledge and clinical experiences in theories and approaches regarding occupational therapy and who are also professionals with strong work ethics, partnership, and global mindset and creative talents with problem-solving abilities.

为帮助有身体和精神残疾的患者在地区社区中独立生活,并健康地履行赋予自己的职责,本学科培养负责评估及治疗、教育的专家。

培养具备作业疗法理论和渐近法相关专业知识和临床经验的作业治疗师,具有坚定职业观的合作关系及全球精神的专业职业人才,以及具备解决问题能力的创意性人才。



네이버카페 cafe.naver.com/scjeilot

Dept. of Speech & Language Pathology (3-year)

语言治疗系(三年制)

The Dept. of Speech & Language Pathology develops "language rehabilitation specialists" who provide customized diagnosis, assessment, and rehabilitation services to people with disabilities in communication.

In addition to specialists in language rehabilitation, a promising occupation in the future that will be opened by the Fourth Industrial Revolution, it provides intensive field-centered and character building education in order to foster talents possessing qualifications as early childhood educators (early childhood educator grade 2 for children with disabilities).

语言治疗系是针对有各种语言沟通问题的残疾人,提供针对型诊断、评估及康复的保健医疗人才——"语言康复师"的学科。

为培养与第四次工业革命的崭新未来共同发展的专业有潜力工种——"语言康复师",以及具备保育教师(针对残疾婴幼儿的二级保育教师)资格的人才,重点指导实务为主及人品强化教育。



다음카페 cafe.daum.net/slp2014

Dept. of Nursing (4-year)

护理学系(四年制)

The Dept. of Nursing fosters global nursing talents equipped with practical abilities and professional knowledge by providing students with systematic curriculum based on the spirit of trust, love, and respect for human life.

It improves students' professional knowledge and practical abilities by organizing practice sessions using high-performance simulators, anatomy dissections, international exchange programs, and group activities to improve knowledge in the field of major. By applying evidence-based courses that require students' critical thinking, it improves the students' response capabilities and leadership along with problem-solving abilities.

本学科以信赖和爱、尊重人类生命为基础，通过系统化的教育课程，培养具有护理实务能力和专业知识的以人为本的全球护理人才。

通过利用高性能模拟装置的实习、人体解剖学实习、运营国际交流项目、提升专业能力的社团活动等，提高专业知识和护理实务能力。适用根据循证及批判性思维的护理课程，培养解决护理问题的能力，以及应对保健医疗环境变化的全球应对能力和领导能力。



다음카페 cafe.daum.net/sfc-nursing

Dept. of Total Beauty Arts

全面美妆美容系

The Dept. of Total Beauty Arts develops artists with the ability to create healthy beauty by providing students with systematic and scientific education for total beauty service.

To foster professional talents for the beauty industry, which has continuously been a growth engine industry in line with the Fourth Industrial Revolution, the Dept. of Total Beauty Arts established a customized industry-academe cooperation system to create jobs for students and help them pursue their studies while working in the field. By introducing the CIDESCO course, an international standard course for cosmetology, it secures opportunities for students to find employment overseas. In addition, the highly qualified faculty strives to develop competent talents with outstanding practical abilities.

为应对全面美容时代，本学科科学地学习系统化知识和技术，培养兼具能够创造健康之美的能力和应用能力的艺术家。

伴随着第四次工业的发展，美容产业成为持续成长动力产业，为培养该产业的专业人才，通过针对青年的产学协约，构建能够创造在校工作工作岗位及工作学习并行的合作体制，导入皮肤美容国际标准课程——圣迪斯哥 (CIDESCO) 教育课程，提高国际化海外就业机会，并通过实务能力卓越的优秀教授团队，培养现场实务能力优秀的人才。



네이버카페 <http://cafe.naver.com/totalbeauty1004>

Facilities 大学校内简介



Main Entrance
大学正门



Student (Welfare) Center
学生(福利)会馆



Central Park
中央公园



Job Center
大学就业岗位中心



Im Ock Dormitory
林玉住宿馆(宿舍)



Theater
小剧场



College Museum
大学史料馆



library
图书馆



Job
Cafe



Sports Field
大运动场

▣ Talent Award of Korea(Presidential Award) 大学校内简介

“ The only technical college to win the Talent Award of Korea (Presidential Award) 7 times ”

专科学院中唯一一个荣获七次韩国人才奖 (总统奖) 的学校



Lee Geum-ryeol,
Dept. of Electrical Automation
电气自动化系李金烈



Kim Seong-hui, Dept. of
Broadcasting and Entertainment
广播表演系金圣熙



Park Byung-Woo Dept. of Industrial
Safety Engineering Management
产业安全管理系朴丙右



Choi Nam-gyun, Dept. of Industrial
Safety Engineering Management
产业安全管理系崔南奎



Heo Jeong-hwa, Dept. of Industrial
Safety Engineering Management
产业安全管理系许贞和



Kim Jin-suk,
Dept. of Social Welfare
社会福利系金真淑



Kim Chan-ho, Dept. of Industrial
Safety Engineering Management
产业安全管理系金灿镐

Scholarship

大学奖学金

“ Suncheon Jeil College awards special internal and external scholarships ”

顺天第一大学特别的校内外奖学金优惠

Internal Scholarships 内部奖学金

- | | |
|--|--------------|
| - Scholarship based on the Scholastic Ability Test result | - 高考成绩奖学金 |
| - Scholarship for students with excellent records at the time of early admission/regular admission | - 随时、定时招生奖学金 |
| - Scholarship for students who start studying late in life | - 晚年求学奖学金 |
| - Scholarship for academic pursuit | - 努力学习奖学金 |
| - Consolatory scholarship | - 勤工俭学奖学金 |
| - Scholarship for students from rural regions | - 农渔村奖学金 |
| - Scholarship for intensive study | - 专业深化奖学金 |
| - Scholarship based on the TOEIC result | - 托业奖学金 |
| - Scholarship for contests | - 比赛奖学金 |
| - Scholarship to promote learning by housewives | - 主妇学业鼓励奖学金 |
| - Congeniality scholarship | - 友爱奖学金 |
| - Scholarship for students with meritorious achievements | - 功劳奖学金 |
| - Scholarship for special education | - 特殊教育奖学金 |
| - Scholarship for Baedeul Campus | - 培德校园奖学金 |
| - Scholarship for outstanding talents | - 优秀人才奖学金 |
| - Scholarship for technicians | - 技师奖学金 |
| - Industrial scholarship | - 产业体奖学金 |
| - Craft guild scholarship | - 同职奖学金 |
| - Scholarship for persons who have rendered distinguished service | - 报勋奖学金 |
| - Special President's scholarship | - 校长特别奖学金 |
| - Scholarship for outstanding students | - 优秀奖学金 |
| - Scholarship for lifelong education | - 终身教育奖学金 |
| - Scholarship for military personnel | - 军人奖学金 |
| - Scholarship for livelihood | - 生活辅助奖学金 |
| - Scholarship for families of alumni | - 校友会奖学金 |
| - Scholarship for national unification | - 统一奖学金 |

External Scholarship 外部奖学金

- | | |
|--|-----------|
| - Sarangdeurim Scholarship | - 爱心梦想奖学金 |
| - Scholarships based on personal donations | - 个人捐赠奖学金 |
| - Government scholarship for persons who have rendered distinguished service | - 政府报勋奖学金 |
| - Scholarship for students from rural regions | - 农村希望奖学金 |
| - Government scholarship for national unification | - 政府统一奖学金 |

About Suncheon City 顺天市简介



This is an urban - rural complex city located in the eastern part of Jeollanam-do, Korea. Since the old days, Suncheon has been a major transportation point and the center of administration and education. It has an area of 910.43km² and a population of 283,476 (as of Feb. 2020). With mountains and streams of varying sizes, Suncheon prides itself in its abundant water. It also has a warm and mild climate as it is located at the southern end of Korea. As a city with many ecological tourism resources including Suncheon Bay Wetland Reserve, Naganeupseong Fortress, Seonamsa Temple, and Songgwangsa Temple, Suncheon marked the beginning of Korea's garden culture and industry by hosting the International Garden Exposition Suncheon Bay Korea 2013. Suncheon is a city of garden that is home to Korea's No. 1 National Garden. It was also selected as the Culture City of East Asia in 2020 together with Yangzhou of China and Kitakyushu of Japan. (Tourist Destinations: Suncheon Bay Wetland Reserve, Suncheon Bay National Garden, Naganeupseong Fortress, Songgwangsa Temple, Seonamsa Temple, Suncheon Open Film Set)

位于韩国全罗南道东部的城乡复合城市。自古以来就是四通八达的交通要塞及行政、教育中心，面积为910.43km²，人口达283476人（2020年2月目前）。大大小小的山地和溪流众多，水源丰富，因位于南部而气候温暖。此外，顺天市拥有顺天湾湿地、乐安县城、仙岩寺、松广寺等优秀的生态旅游资源，2013年通过顺天湾国际庭园博览会，率先开启了韩国的庭园文化和庭园产业。既是拥有韩国第一号国家庭园的庭园城市，同时与中国扬州、日本北九州市一起获选2020东亚文化城市。
旅游景点：顺天湾湿地、顺天湾国家庭园、乐安县城、松广寺、仙岩寺、电视剧拍摄地等

Suncheon Bay Wetland Reserve 顺天湾湿地

As one of the world's five coastal wetlands, this vast wetland has a dense reed field. Suncheon Bay Wetland, where various rare migratory birds and organisms of mud flat coexist in peace, is set to be listed as a UNESCO World Natural Heritage Site in 2020. The beautiful "S-shaped curve" of the wetland can be viewed from Yongsan Observatory.

作为世界五大沿岸湿地，由密密麻麻的芦苇田和望不到尽头的广阔滩涂构成。各种珍稀候鸟和滩涂中的生命在这里和平共存，2020年将被列入联合国教科文组织世界自然遗产。登上龙山观景台，即可将顺天湾之美“S型曲线”尽收眼底。



Suncheon Bay National Garden 顺天湾国家庭园

Suncheon Bay National Garden consists of thematic gardens including a traditional Korean garden and a lake garden designed by world-renowned garden designer Charles Jencks as well as the gardens of 13 countries. As nature at its most beautiful created by humans, Suncheon Bay National Garden attracts over five million tourists each year. In 2015, it was designated as Korea's No. 1 National Garden.

是用祖先们巧手打造的传统庭园、包括世界级庭园设计师查尔斯詹克斯设计的湖水庭园在内的主题庭园和13个国家的世界庭园等装饰而成的大型庭园。这里用人类打造的最优美的自然面貌为游客带来感动，每年都有超过500万名游客到访。2015年被指定为韩国第一号国家庭园。



Campus Map 校园指南



1 Bibong Hall 飞凤馆

Dept. of Smart Civil & Environment Engineering 智能建设环境系

Dept. of Architecture & Interior Building 建筑装修系

Dept. of Occupational Therapy 作业疗法系

Dept. of Nursing 护理学系

Dept. of Industrial Safety Engineering Management 产业安全管理系

4 Seongshim Hall 圣心馆

Dept. of Early Childhood Education 幼儿教育系

Dept. of Social Welfare 社会福利系

Dept. of Coffee Baristaship & Culinary Arts 咖啡师&餐饮烹饪系

Dept. of Total Beauty Arts 全面美妆美容系

Dept. of Medical Rehabilitation 医疗康复系

Lifelong Education Center 终身教育院

2 Inje Hall 麟济馆

Dept. of Multimedia 多媒体系

Dept. of Fire Protection & Disaster Prevention 消防防灾系

Dept. of Management and Accounting 经营会计系

Dept. of Health Medical Administration 保健医疗行政系

Dept. of Speech & Language Pathology 语言治疗系

International Cooperation Group 对外合作团

5 Engineering Hall 工程馆

Dept. of Mechanical & Automotive Engineering 机械汽车系

Dept. of Electrical Automation 电气自动化系

Dept. of Iron Industry 制铁产业系

Dept. of Industrial Electronics Engineering 产业技术电子系

Dept. of Industrial & Chemical Electronics Engineering 产业技术化工系

3 Welfare Center 福利会馆

Industry-Academe Cooperation Group 产学研合作团

Job Center 大学就业岗位中心

Student Counseling Center 学生咨询中心

College Museum 大学史料馆

Safety Experience Center 安全体验馆

Cafeteria 内部食堂

6 Library 图书馆

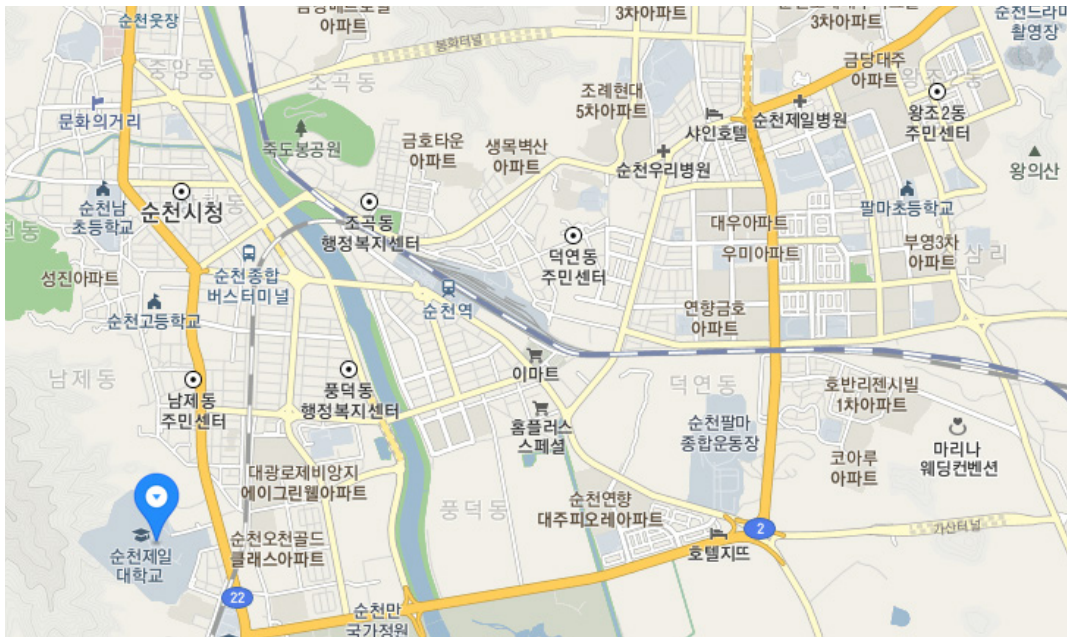
7 Im Ock Dormitory 林玉住宿馆(宿舍)

8 Theater 小剧场

9 Childcare Center 托儿所

10 Kindergarten 幼儿园

Directions 来访路线



Public Transportation 使用各交通方式的来访路线

	By Bus 市内公交车	52, 60, 61, 62, 63, 64, 67, 68, 81, 82, 84, 85, 86, 88, 101 (From Intercity Bus Terminal) (以市外巴士客运站为准)
	By Air 飞机	Seoul (Gimpo) ↔ Yeosu, Suncheon Airport: 55 minutes 首尔(金浦 ↔ 丽水、顺天机场: 耗时55分钟)
	By Train 火车	Seoul (Yongsan) ↔ Suncheon : 2 hours and 40 minutes (KTX) Gwangju (Songjeong) ↔ Suncheon : 2 hours (Mugunghwa Train) Jeonju ↔ Suncheon : 1 hour and 20 minutes (Mugunghwa Train) 首尔(龙山 ↔ 顺天: 耗时2小时40分钟 (KTX) 光州(松汀 ↔ 顺天: 耗时2小时 (无穷花号) 全州 ↔ 顺天: 耗时1小时20分钟 (无穷花号)
	By Express Bus 高速巴士	Seoul (Gangnam) ↔ Suncheon : 3 hours and 40 minutes Gwangju ↔ Suncheon : 1 hour, Jinju ↔ Suncheon: 40 minutes 首尔(江南 ↔ 顺天: 耗时3小时40分钟 光州 ↔ 顺天: 耗时1小时, 晋州 ↔ 顺天: 耗时40分钟
	By Car 自驾	Seoul (Gangnam) ↔ Suncheon: 3 hours and 40 minutes Gwangju (Gwangcheon) ↔ Suncheon: 1 hour Busan (Haeundae) ↔ Suncheon: 2 hours and 30 minutes 首尔(江南 ↔ 顺天: 耗时3小时40分钟 光州(广川) ↔ 顺天: 耗时1小时 釜山(海云台) ↔ 顺天: 耗时2小时30分钟

Address : 17 Jeildaehak-gil, Suncheon-si, Jeollanam-do, Korea Tel.82-61-740-1234 Fax.82-61-743-5108
地址 : 全罗南道顺天市第一大学街17 电话 82-61-740-1234 传真 82-61-743-5108



순천제일대학교
SUNCHEON JEIL COLLEGE

