



AJO UNIVERSITY



An aerial photograph of the Aju University campus. In the center is a large, rectangular fountain with a statue of a person on a horse. The fountain is surrounded by a paved area and greenery. In the background, there are several modern buildings, including a large one on the left and a church with a tall cross on the right. The sky is clear and blue.

CONTENTS

Ajou University Quick Facts

04

Location of Ajou - Suwon

06

Ajou University History

08

List of Departments

10

Research Institutes

12

Medical Center

14

International Programs

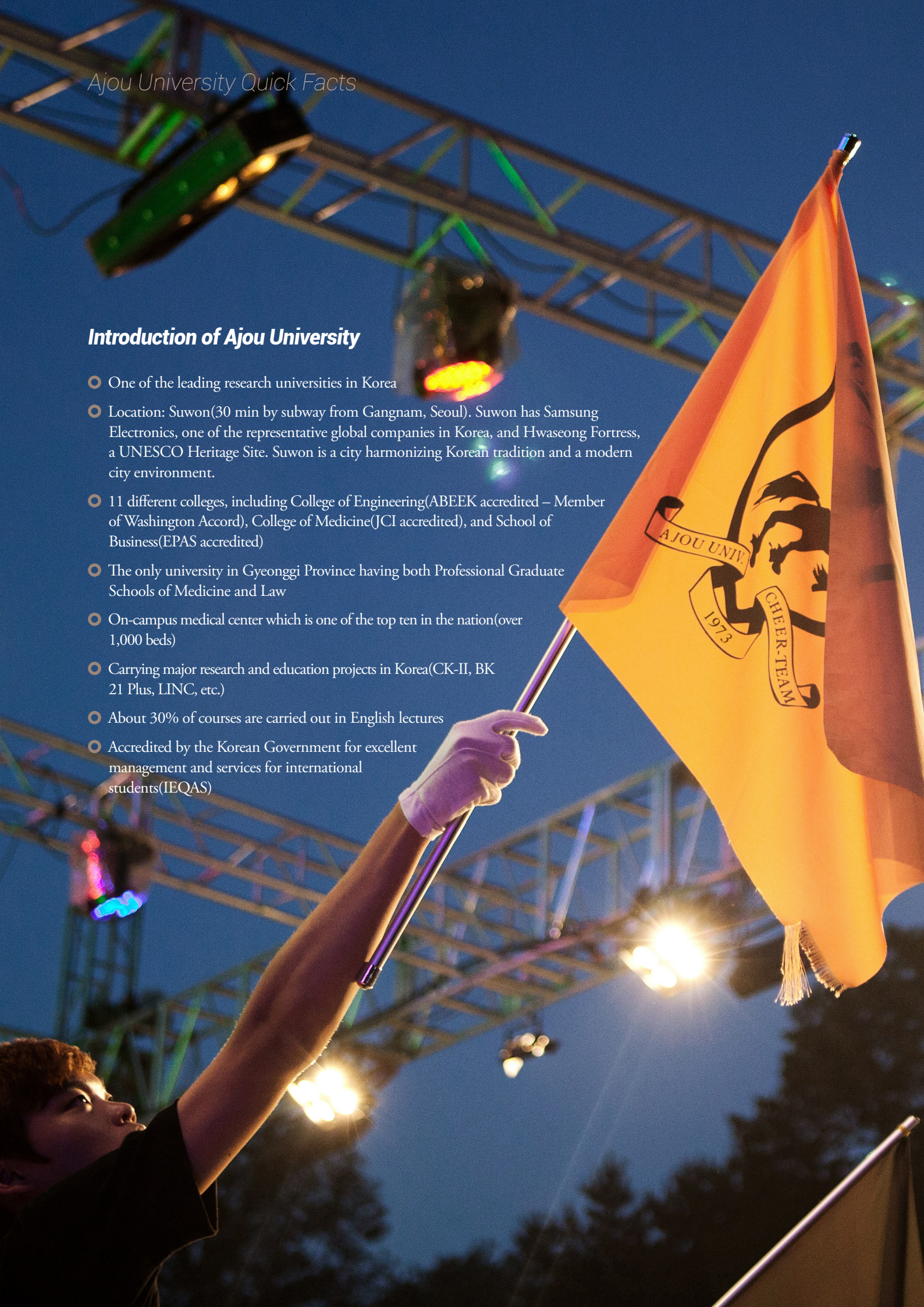
16

International Dormitory

26

Introduction of Ajou University

- One of the leading research universities in Korea
- Location: Suwon(30 min by subway from Gangnam, Seoul). Suwon has Samsung Electronics, one of the representative global companies in Korea, and Hwaseong Fortress, a UNESCO Heritage Site. Suwon is a city harmonizing Korean tradition and a modern city environment.
- 11 different colleges, including College of Engineering(ABEEK accredited – Member of Washington Accord), College of Medicine(JCI accredited), and School of Business(EPAS accredited)
- The only university in Gyeonggi Province having both Professional Graduate Schools of Medicine and Law
- On-campus medical center which is one of the top ten in the nation(over 1,000 beds)
- Carrying major research and education projects in Korea(CK-II, BK 21 Plus, LINC, etc.)
- About 30% of courses are carried out in English lectures
- Accredited by the Korean Government for excellent management and services for international students(IEQAS)



One of the Top 100 Asian Universities

One of the leading research universities in Korea



15,000

Student

15,000 in total(10,000 undergraduate and 5,000 graduate students)



1,350

Faculty

Faculty members including medical center



310

Partner universities

Having collaborative partnerships with over 310 universities in about 70 countries



900

International students

900 international students from over 65 countries

Location of Ajou - Suwon

30km (20Mile)



Seoul



AJOU UNIVERSITY

Suwon

(The capital in Gyeonggi Province)



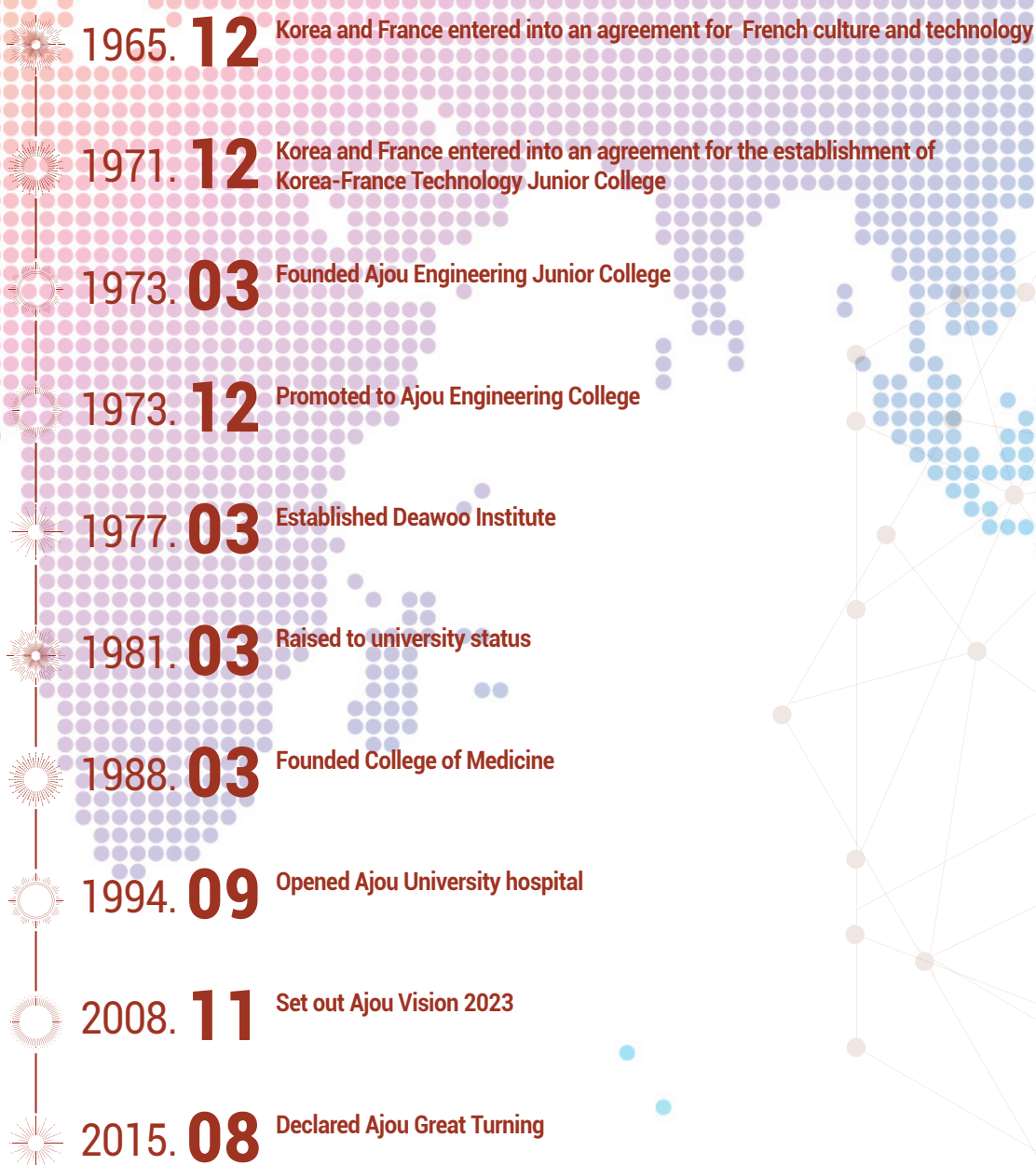
Hwaseong Fortress

(UNESCO World Heritage)



Ajou University is located in Suwon, 30km from Seoul. Suwon is physically located in the middle of Gyeonggi Province, with a population of one million. As Suwon is one of the important Korean districts with rich culture and advanced science and technologies, the unique features of Suwon create the best academic environment. Suwon is home to Samsung Electronics and has Hwaseong Fortress, a world heritage designated by UNESCO. It is said that Suwon is a perfect place to experience and learn about the past, present and future of Korea for international students. It is close to Seoul and takes 30 minutes by subway and bus, thanks to the well-developed public transportation system.

Ajou University History

- 
- 1965. **12** Korea and France entered into an agreement for French culture and technology
 - 1971. **12** Korea and France entered into an agreement for the establishment of Korea-France Technology Junior College
 - 1973. **03** Founded Ajou Engineering Junior College
 - 1973. **12** Promoted to Ajou Engineering College
 - 1977. **03** Established Deawoo Institute
 - 1981. **03** Raised to university status
 - 1988. **03** Founded College of Medicine
 - 1994. **09** Opened Ajou University hospital
 - 2008. **11** Set out Ajou Vision 2023
 - 2015. **08** Declared Ajou Great Turning

10 Programs under Ajou Great Turning

Ajou University's Development Strategies

Self-Designed Curricula in Five Tracks

Flipped Learning Classes

Ajou Integrity Campaign

Proactive Research Powerhouse

"After You" Social Mobility Enhancement

Need-Based "Ajou Humanity" Scholarships

Flagship International Program "Careers Abroad"

Center of University-Industry Collaboration

Creative Ajou Town with Support for Startups

Self-Motivated "Challenge Semester"

List of Departments

List of Departments Colleges & Schools



Spring 1st

March ~ Mid June



Summer Vacation

End of June ~ End of August



Ajou International **Summer** School

Early July ~ End of July



Fall 2nd

September ~ Mid December



Winter Vacation

Mid December ~ End of February



College of Engineering

Department of Mechanical Engineering

Department of Industrial Engineering

Department of Chemical Engineering

Department of Materials Science and Engineering

Department of Applied Chemical &

Biological Engineering

Department of Environmental and Safety Engineering

Department of Civil System Engineering

Department of Transportation System Engineering

Department of Architecture

Department of Integrative Systems Engineering

College of Information Technology

Department of Electrical Engineering

Department of Software Engineering

Department of Digital Media

Department of Cyber Security

Department of Military Digital Convergence

College of Natural Science

Department of Mathematics

Department of Physics

Department of Chemistry

Department of Life Sciences

School of Business

Department of Business Administration

Department of e-Business

Department of Financial Engineering

Department of Global Business

College of Humanities

Department of Korean Language and Literature

Department of English Language and Literature

Department of French Language and Literature

Department of History

Department of Culture and Contents

College of Social Sciences

Department of Economics

Department of Public Administration

Department of Psychology

Department of Sociology

Department of Political Science and Diplomacy

Department of Sports and Leisure

School of Medicine

Department of Medical Sciences

College of Nursing

Department of Nursing Sciences

College of Pharmacy

Division of Pharmacy Sciences

Dasan University College

Division of International Studies(Minor)

Department of International Trade and Commerce

Department of Area Studies

Professional Graduate Schools

Law School

Graduate School of Medicine

Special Graduate Schools

Graduate School of International Studies

Graduate School of Industry

Graduate School of Business Administration

Graduate School of Public Affairs

Graduate School of Education

Graduate School of Information and

Communication Technology

Graduate School of Intelligent Transport Systems

Graduate School of Public Health

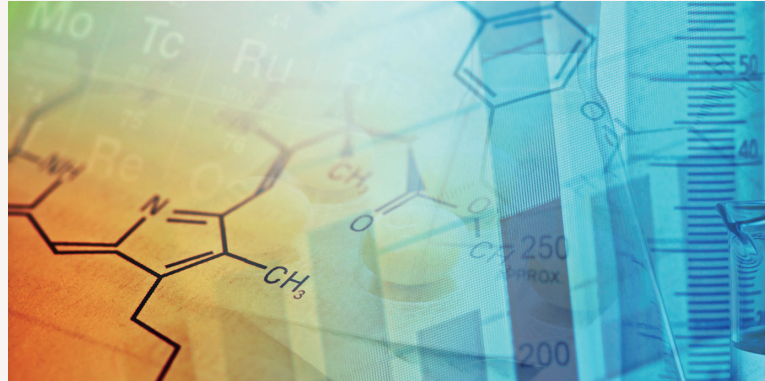
Graduate School of Clinical Dentistry

Graduate School of IT Convergence

Graduate School of Pharmaceutical Industry and

Clinical Pharmacy

Research Institutes



Engineering Research Institute

Information Technology Research Institute

Basic Science Research Institute

Management Research Institute

Humanities Research Institute

Social Sciences Research Institute

Legal Research Institute

Ajou Transportation Research Institute

Environment Research Institute

Research Institute for Information and Electronics Technology

Civil Engineering Research Center

Dasan Research Institute of General Education

Energy and Climate Change Research Institute

Research Center for Automotive Parts Technology

Suwon Development Institute



Ubiquitous Convergence Research Institute

Nano and Information Infusion Technology Research Institute

Educational Research Institute

Global Study Research Institute

Public Policy Research Institute

Jangwi Defense Research Institute

Tropical Studies Institute

Medicinal Science Research Institute

Molecular Science Research Center

Cell Treatment Center

TOD Transit Oriented Development

Ajou Reliability Center

China Policy Institute

Environmental and Safety Research Center

Institute for Medical Sciences

Brain Disease Research Center

Center for Clinical Epidemiology

Chronic Inflammatory Disease Research Center

Immune-Network Pioneer Research Center

Cell Treatment Center

Local Community Safety Promotion Research Institute

Center for Cell Death-Regulating Bio Drugs

Local Clinical Test Center

U-Health Information Research Institute

Nursing Science Research Institute

Institute on Aging

Regional Drug Safety Center

Traumatic Stress Center

Genomic Instability Research Center

Human Genome Research & Bio-Research Center

Medical Center

Ajou University Medical Center



1,088

Beds



41

Outpatient Department



6 Cancer Center

Stomach Cancer Center, Lung Cancer Center,
Colon Cancer Center, Breast Cancer Center,
Liver Cancer Center, Gynecologic Cancer Center



2011, 2014

JCI Accreditation in 2011 and
re-accredited in 2014

Since its foundation in 1994, Ajou University Hospital has been dedicated to caring for patients and providing the most up-to-date medical information for local and regional physicians and facilities, and has been growing along with leading national medical developments through state-of-the-art research. We provide patient-focused high quality medical services, rendered by experienced and specialized medical staff with state-of-the-art equipment in a comfortable environment.

Clinical Department

Allergy & Rheumatology
Anesthesiology & Pain Medicine
Arthritis Center
Breast Cancer Center
Cardiology
Dentistry
Dermatology
Emergency Medical Center
Endocrinology & Metabolism
Family Practice & Community Health
Gastroenterology
Genetics Clinic
Hematology – Oncology
Laboratory Medicine
Learning and Developmental Promotion Clinic
Nephrology
Neurology
Neurosurgery
Nuclear Medicine
Obstetrics & Gynecology
Occupational and Environmental Medicine
Ophthalmology
Orthopedic Surgery
Otolaryngology
Pain Clinic
Pathology
Pediatrics
Physical Medicine & Rehabilitation
Plastic & Reconstructive Surgery
Psychiatry & Behavioral Sciences
Pulmonary & Critical Care Medicine
Radiation Oncology
Radiology
Surgery
Thoracic & Cardiovascular Surgery
Urology

Specialized Center

1. Cardiovascular Center

- Performed more than 40,000 cardiac catheterizations up to 2013
- Consolidated the Cardiology, Thoracic Surgery, and Cardiovascular Surgery teams into The Cardiovascular Center
- Rated 1st Class in coronary artery bypass and angioplasty intervention by The Ministry of Health and Welfare
- Emergency intervention system for acute myocardial infarction

2. Thyroid Diseaser

- Minimal Invasive Surgery (MIS) and da Vinci Robot Surgery is available.

3. Artificial Joint Replacement

- Ajou has been practicing the largest number of Artificial Joint Replacement procedures using Magnetic Navigation not only nationwide but also in the whole of Asia.

4. Breast Cancer Center

- Endoscopic mastectomy with reconstruction
- Around 700 cases of breast cancer & tumorectomies and around 200 cases of mammotomes yearly
- Higher cure rate and breast preservation rate than the national average

Clinical achievements

- Over 40,000 cases of cardiac catheterizations
- Approximately 500 cases of kidney transplants
- Approximately 300 cases of liver transplants
- Approximately 220 cases of artificial ear cochlear implantations
- Approximately 3,000 cases of robotic surgeries

International Programs

International Programs





Ajou is widely recognized for its innovative international programs and strong support for international students and has a collaborative partnership with over 310 universities in 70 countries. There is a wide range of international programs at Ajou including student and faculty exchanges, research cooperation, international summer school, Korean language program, etc.





Korean Language Program

AKP (Ajou Korean Program) is for foreigners and overseas Koreans who wish to apply for undergraduate/graduate school or speak Korean fluently for business and to find a job.

Intensive course consists of 6 levels (Level 1~Level 6). One term takes 10 weeks; to complete all courses, it takes about one year and half.

- One term: 10 weeks
- Class hours: 200 hours (4 hours/day X 5 days/week X 10 weeks)
- Class Days: Monday to Friday, 09:00 – 13:00
- Tuition: KRW1,400,000/term, Application Fee: KRW60,000 (For freshmen only)

AFP (Ajou Foundation Program) is a pre-undergraduate program where students can prepare for entry into Ajou University. This program offers basic subjects (English, Mathematics, Korean Culture, TOPIK) and intensive Korean language subjects for academic purposes to help international students prepare for their studies before entering the undergraduate program. Before entering the undergraduate program, AFP graduates (third level or higher) are guaranteed enrollment at Ajou University if they meet the entry requirements of Ajou University's undergraduate program, and will be given undergraduate academic credits (3 to 6 credits) for Ajou University.

- One term: 10 weeks
- Class hours: 260 hours
 - Korean Language (200H) + Culture or TOPIK(20H) + English or Math(20H) + Korean practice class(20H)
- Class Days: Monday to Thursday 09:00 – 16:00 / Friday 09:00 – 13:00
- Tuition: KRW1,687,000/term, Application Fee: KRW60,000 (For freshmen only)



How to Apply

Please refer to the Ajou University website.

<http://cie.ajou.ac.kr>



Undergraduate Admission

Ajou University was selected for the Advancement of College Education (ACE) program in 2011 by the Ministry of Education, and holds the title 'a university that teaches well'. The undergraduate college selects excellent international students from around the world and supports students to get a worldclass education with Ajou University students. Currently, international students from about 20 countries are studying at Ajou University. The Ajou Foundation Program (AFP), a pre-college program, helps international students to complete their studies successfully with Korean proficiency and knowledge of college life. International students will be admitted for undergraduate programs by selecting a major among various fields such as Engineering, Information Technology, Natural Sciences, Business, Humanities or Social Sciences. A great number of courses are offered in English in various majors. There are variety of programs for international students and consulting service are available to provide better adaptive study environment. International scholarships are available for international students based on GPA, various volunteer works, best Korean proficiency, and being a model student for others.

Tuition

Approximately KRW 3,500,000 – 4,500,000 (Approx. USD 3,200-4,100) per semester

Eligibility

Freshman Admission

Nationality _ Applicant and both parents must be non-Korean citizens (foreign citizen by birth)

Academic Requirements _ Graduate (or graduate-to-be) of high school who fully completed overall education courses equivalent to the primary and secondary education in Korea

Language Proficiency _ Have obtained TOPIK level 3 or a certain level of English Proficiency Score(only applied to Business Administration applicants)

Transfer Admission

Nationality _ Same as above

Academic Requirements _ Applicants who have finished 2 years or 4 semesters (2 semesters per 1 year) in 4-year universities and have obtained more than 1/2 of graduation credits. Or graduates(graduates-to-be) of 2 or 3 year colleges

Language Proficiency _ Same as above

How to Apply

Please refer to the Ajou University website.

<http://www.ajou.ac.kr/en/admission>



Exchange Student Program

Ajou University offers a one-semester or one-year exchange program for students from around the world. Consistent with its emphasis on global education, Ajou University offers a number of courses taught in English. Ajou University welcomes about 400 exchange students from various countries each year, and designs programs to provide the best opportunity for international and Korean students to study each major field in an international environment. Credits earned while studying at Ajou University are usually transferred to the students' home universities. There are a series of exciting social events and field trips arranged for all incoming exchange students. AGA (Ajou Global Ambassador) is an Ajou student group which plays an essential role in helping international students settle, and it introduces them to Korean culture. This allows international students to build a close relationship with Korean students. In order to apply for Ajou University, the student's home university must be a partner of Ajou University. The application process starts 6 months prior to the beginning of each semester, twice a year.

Tuition

Exchange students apply through the International Office of their home campus and pay tuition to their home university. If student's university is a member of ISEP, a student can also apply for the ISEP student exchange program to Ajou University.

For regular exchange students, the application fee and tuition are waived. For ISEP exchange students, room and board is also waived.

Eligibility

Students of Ajou University's partner universities or students who apply through the International Student Exchange Program (ISEP)

How to Apply

Please refer to the Ajou University website.

<http://www.ajou.ac.kr/en/incoming>



Visiting Student Program

The Visiting Student Program is an opportunity for students to broaden their college experience and supplement the undergraduate programs at their home institutions by studying at Ajou University for up to two semesters. A variety of cultural field trips and social activities enrich the campus life of international students.



Tuition

Approximately KRW 3,500,000 – 4,500,000 (Approx. USD 3,200-4,100) per semester



Eligibility

The program is open to students who are currently enrolled in an undergraduate degree-seeking program at another college/university, and who will have completed at least one full year of college credit by the time of enrollment.



How to Apply

Please refer to the Ajou University website.

<http://www.ajou.ac.kr/en/incoming>



Dual Degree Program

Ajou University's Dual Degree is designed to nurture students with global competency in various disciplines. Students will discover not only high caliber faculty members and first-class education, but also a supportive and collaborative learning environment while pursuing a dual degree at Ajou University. Students spend 2 years at Home Institution +2 Years at Ajou University and receive two diplomas from both home and host (Ajou) universities.



Tuition

Approximately KRW 3,500,000 (Approx. USD 3,400) per semester



Eligibility

- Applicants must have completed or will have completed at least 2 years or 4 semesters (2 semesters a year, excluding summer and winter terms) at a sister university of Ajou and have obtained 50% of the graduation requirement credits of the home universities
- Applicants who are recommended by Ajou's sister university that has signed a dual degree agreement with Ajou University
- A Grade Point Average (G.P.A) of B or higher on all courses from the home university is required
- Applicants whose Official English Proficiency Test Score is above the standard TOEFL IBT 80 (CBT 213, PBT550), TEPS 556, IELTS 6.5 or other English proficiency score correspondent to the requirement



Scholarship

DDP Scholarship for the first semester varies from 30% to 100% tuition waiver according to the applicants' English proficiency and academic records from the home universities. From the 2nd semester, DDP scholarship is determined according to the students' academic performance from the previous semester (also varies from 50-100% tuition waiver)



How to Apply

Dual Degree Program Applicants: Please contact your home coordinator for required documents Dual Degree Partnership: Please contact Ajou University DDP coordinator at admission@ajou.ac.kr/ddp@ajou.ac.kr



Ajou International Summer School (AISS)

Ajou International Summer School, AISS, is a comprehensive short-term study abroad program that is offered every summer for all students including international exchange students, individual applicants, and students from Ajou University. The highlights of Ajou International Summer School are firstly the global feature of its participants (1/3 from the Americas, 1/3 from Europe, and 1/3 from the Asia-Pacific region) as well as high quality lectures provided by excellent faculty members invited both from Ajou University and its overseas partner universities. It offers a unique opportunity for international students to experience Korean culture and tradition while taking courses during summer. AISS is a 4-week long international summer school in the field of Korean Studies, Asian Studies, International Studies and Business Administration, all taught in English. Not only are classes offered that can be transferred for credits, but there are also special social and cultural activities, language programs, and other exciting events for students to explore and learn about Korea and its culture during the summer.



Tuition

Approximately KRW 2,400,000 (Approx. USD 2,200)

- Various scholarships available and the tuition can be changed according to the circumstance.



Program Period

- 4 weeks in July



Eligibility

All students currently enrolled in university or high school graduates wishing to take university-level courses are eligible for admission.



Every fall, Ajou University hosts the annual festival of Ajou International Day. This is one of the biggest festivals of the year on the Ajou campus, and it offers the chance for a get-together for people from across the globe. The event plays an instrumental role in promoting different cultures to all participants. More than 500 international students from over 40 nations take part in the festival, along with ambassadors, city government officials, and other important figures. It provides a wide range of activities, including an international food festival where the students prepare and serve dishes unique to their nations. International students demonstrate costumes, music, and performances while providing information and exhibiting photographs showing different aspects of their countries. Ajou International Day will not only bring together the students and staffers of Ajou University, but will also provide the chance to local residents to experience and enjoy different cultures of the world. We are proud to provide this unique setting to celebrate cultural diversity and contribute to the internationalization of our university.



Field Trips

Ajou University offers various field trips during each semester for international students. Visiting top global companies such as Samsung Electronics, Hyundai Motors, and other companies allows students to learn about Korea's business and industry.

CCAP

The Suwon city government. International students visit a secondary school in the Suwon area and introduce their country and culture to the local students. Not only the local Korean students but also international students can review the culture of their own country, and they develop the ability to introduce it efficiently, as well.

AGA

Ajou Global Ambassador(AGA) is a buddy program to support international students. AGA members help international students to settle in Korea in many aspects such as airport pick-up, grocery shopping, purchasing cellphones, etc. They also can build friendship through various social activities and trips.

Student Associations and Clubs

Ajou students are strongly encouraged to participate in extracurricular activities that enrich campus life. About 60 extracurricular associations cover every field: arts, science and technology, volunteer social work, religion, martial arts, and many others. There are also about 130 academic clubs where students with the same academic interests get together under faculty advising. Ajou University holds an annual "Student Club of the Year" contest. International students are also strongly encouraged to join the student clubs.

English Café & Café Francophonie

Each department or college in Ajou University also offers variety social activities. Especially, the College of Humanities operates English Café and Café Francophonie for international and domestic students and professors to make friends outside of classes.

International dormitory



Establishment : Spring 2015

Capacity

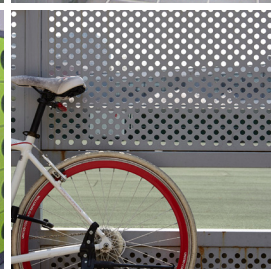
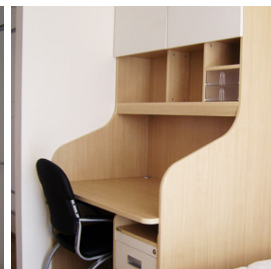
- 406 students
- 2 bedroom shared with a Korean student (1:1 matching)

Facility

laundry room, meditation room, gymnasium, unattended delivery locker, kitchen, common room, shower rooms and toilets on each floor

Room Amenity

beds, dressers, desks, chairs, air conditioner/heater and free Wi-Fi





G r e a t i v e

creative for great

*"Greative" is a compound word of Great + Creative,
which symbolizes Ajou's Development Strategy
"Ajou Great Turning".*



AJOU UNIVERSITY

Office of International Affairs

Ajou University, Worldcupro 206, Yeongtong-gu, Suwon 16499, Korea

www.ajou.ac.kr